

**An Examination of the SAT Results for the  
Class of 2005**

**Department of Shared Accountability**

**September 2005**

**Clare Von Secker, Ph.D.**



**DEPARTMENT OF SHARED ACCOUNTABILITY**

**Faith S. Connolly, Acting Director**  
**850 Hungerford Drive**  
**Rockville, Maryland 20850**  
301-279-3925

**Jerry D. Weast**  
*Superintendent of Schools*

**John Q. Porter**  
*Deputy Superintendent  
for Information and  
Organizational Systems*

## Table of Contents

Executive Summary .....	vii
Background .....	1
Changes to the SAT .....	1
A Description of the “Old” SAT.....	1
A Description of the “New” SAT .....	2
Interpreting SAT Participation and Performance .....	2
Methodology .....	4
Key Research Questions .....	4
Description of SAT Test Takers .....	4
Interpreting SAT Mean Scores and Performance Bands .....	4
Description of Appendices.....	5
Results .....	6
SAT Participation.....	6
SAT Participation by Gender.....	7
SAT Participation by Race/Ethnicity .....	7
SAT Participation by Service Group .....	8
SAT Mean Scores .....	9
District Scores.....	9
Scores by Gender and Race/Ethnicity.....	9
Scores by Service Group.....	11
Performance Bands .....	11
Performance Bands by Gender .....	12
Performance Bands by Race/Ethnicity .....	13
Performance Bands by Service Group.....	14
Discussion .....	15

References .....16

Appendix A Comparison of MCPS and National SAT Scores .....19

Appendix B SAT Participation and Performance for the MCPS Classes of 2001 to 2005 by Demographic Group.....23

Appendix C SAT Participation and Performance for the MCPS Classes of 2001 to 2005 by High School .....27

Appendix D SAT Participation and Performance for the MCPS Classes of 2001 to 2005 by High School .....33

## Tables

Table 1	Percentage and Number of Students in the Classes of 2001 to 2005 Who Took the SAT by Demographic Group.....	6
Table 2	Most Recent and Highest SAT Scores for Students in the MCPS Classes of 2001 to 2005 .....	9
Table 3	Most Recent SAT Scores for Students in the MCPS Classes of 2001 to 2005 by Gender and Race/Ethnicity .....	10
Table 4	Most Recent SAT Scores for Students in the MCPS Classes of 2001 to 2005 by Service Group .....	11
Table A1	Mean Most Recent SAT Scores for the Classes of 1975 to 2005.....	20
Table A2	Mean Most Recent SAT Combined Verbal and Math Scores for the Classes of 1990 to 2005 by Gender .....	21
Table A3	Mean Most Recent SAT Combined Verbal and Math Scores for the Classes of 1990 to 2005 by Race/Ethnicity .....	22
Table B1	SAT Participation Rates of MCPS Seniors in the Classes of 2001 to 2005 by Demographic Group.....	24
Table B2	Mean Most Recent SAT Scores of MCPS Seniors in the Classes of 2001 to 2005 by Demographic Group .....	25
Table B3	Mean Highest SAT Scores of MCPS Seniors in the Classes of 2001 to 2005 by Demographic Group.....	26
Table C1	SAT Participation Rates of MCPS Seniors in the Classes of 2001 to 2005 by High School .....	28
Table C2	Mean Most Recent SAT Scores of MCPS Seniors in the Classes of 2001 to 2005 by High School .....	29
Table C3	Mean Highest SAT Scores of MCPS Seniors in the Classes of 2001 to 2005 by High School .....	30
Table C4	Mean Most Recent SAT Combined Verbal and Math Scores for Students in the MCPS Class of 2005 by High School and Demographic Group.....	31
Table D1	SAT Participation and Performance of MCPS Seniors in the Classes of 2001 to 2005 for Bethesda-Chevy Chase High School .....	34
Table D2	SAT Participation and Performance of MCPS Seniors in the Classes of 2001 to 2005 for Blair High School.....	35
Table D3	SAT Participation and Performance of MCPS Seniors in the Classes of 2001 to 2005 for Blake High School .....	36
Table D4	SAT Participation and Performance of MCPS Seniors in the Classes of 2001 to 2005 for Churchill High School .....	37

Table D5	SAT Participation and Performance of MCPS Seniors in the Classes of 2001 to 2005 for Damascus High School .....	38
Table D6	SAT Participation and Performance of MCPS Seniors in the Classes of 2001 to 2005 for Einstein High School .....	39
Table D7	SAT Participation and Performance of MCPS Seniors in the Classes of 2001 to 2005 for Gaithersburg High School.....	40
Table D8	SAT Participation and Performance of MCPS Seniors in the Classes of 2001 to 2005 for Kennedy High School .....	41
Table D9	SAT Participation and Performance of MCPS Seniors in the Classes of 2001 to 2005 for Magruder High School.....	42
Table D10	SAT Participation and Performance of MCPS Seniors in the Classes of 2001 to 2005 for Northwest High School.....	43
Table D11	SAT Participation and Performance of MCPS Seniors in the Classes of 2001 to 2005 for Paint Branch High School.....	44
Table D12	SAT Participation and Performance of MCPS Seniors in the Classes of 2001 to 2005 for Poolesville High School.....	45
Table D13	SAT Participation and Performance of MCPS Seniors in the Classes of 2001 to 2005 for Quince Orchard High School.....	46
Table D14	SAT Participation and Performance of MCPS Seniors in the Classes of 2001 to 2005 for Richard Montgomery High School.....	47
Table D15	SAT Participation and Performance of MCPS Seniors in the Classes of 2001 to 2005 for Rockville High School .....	48
Table D16	SAT Participation and Performance of MCPS Seniors in the Classes of 2001 to 2005 for Seneca Valley High School.....	49
Table D17	SAT Participation and Performance of MCPS Seniors in the Classes of 2001 to 2005 for Sherwood High School .....	50
Table D18	SAT Participation and Performance of MCPS Seniors in the Classes of 2001 to 2005 for Springbrook High School.....	51
Table D19	SAT Participation and Performance of MCPS Seniors in the Classes of 2001 to 2005 for Walter Johnson High School.....	52
Table D20	SAT Participation and Performance of MCPS Seniors in the Classes of 2001 to 2005 for Watkins Mill High School .....	53
Table D21	SAT Participation and Performance of MCPS Seniors in the Classes of 2001 to 2005 for Wheaton High School .....	54
Table D22	SAT Participation and Performance of MCPS Seniors in the Classes of 2001 to 2005 for Walt Whitman High School.....	55
Table D23	SAT Participation and Performance of MCPS Seniors in the Classes of 2001 to 2005 for Wootton High School.....	56

## Figures

Figure 1	Most recent and highest SAT mean combined verbal and math scores for the Classes of 1975 to 2005. ....	vii
Figure 2	Percentage of SAT test takers in the Classes of 2001 to 2005 with SAT combined verbal and math scores in various performance bands.....	viii
Figure 3	SAT mean combined verbal and math scores for college-bound seniors in the U.S. Classes of 2001 to 2005 by race/ethnicity (national sample). ....	3
Figure 4	Percentage of students in the Classes of 2001 to 2005 who took the SAT by gender.....	7
Figure 5	Percentage of students in the Classes of 2001 to 2005 who took the SAT by race/ethnicity.....	7
Figure 6	Percentage of students in the Classes of 2001 to 2005 who took the SAT by service group.....	8
Figure 7	Percentage of SAT test takers in the Classes of 2001 to 2005 with SAT combined verbal and math scores in various performance bands.....	12
Figure 8	Percentage of SAT test takers in the Classes of 2001 to 2005 with SAT combined verbal and math scores in various performance bands by gender.....	12
Figure 9	Percentage of SAT test takers in the Classes of 2001 to 2005 with SAT combined verbal and math scores in various performance bands by race/ethnicity.....	13
Figure 10	Percentage of SAT test takers in the Classes of 2001 to 2005 with SAT combined verbal and math scores in various performance bands by service group.....	14

THIS PAGE IS LEFT BLANK INTENTIONALLY



## Executive Summary

The SAT combined verbal and math score of 1101 reported by the College Board for the Montgomery County Public Schools (MCPS) Class of 2005 reflects the second consecutive year that the average score has topped 1100 and that participation has increased. The 2005 results are statistically significantly higher than the national SAT mean combined score of 1028 (Figure 1) and Maryland (1026). There are two additional ways of measuring average SAT student scores—MCPS-verified students and highest mean score. The most recent SAT mean combined verbal and math score for MCPS-verified students in the Class of 2005 was 1102. The highest SAT combined mean score from a single administration, a result that reflects the best effort among MCPS-verified students, was 1114. The most recent and highest SAT mean scores of 1101/1102 and 1114 were the second highest in more than 30 years, and not statistically significantly different than the records of 1102/1103 and 1115 set by the MCPS Class of 2004.

For the Class of 2005, the SAT mean scores for MCPS students of different genders or races/ethnicities were as much as 100 points higher than the national SAT mean scores for the same groups of students (Appendix A).

The most recent and highest SAT combined scores for male (1121/1133), Asian American (1163/1177), and White (1174/1185) students in the MCPS Class of 2005 were the highest in MCPS history (Appendix B).

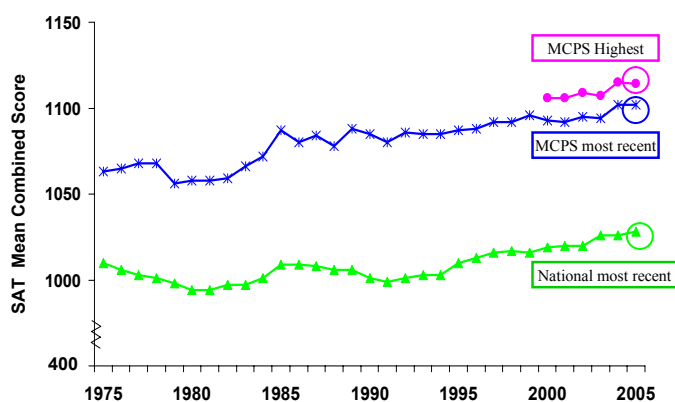


Figure 1. Most recent and highest SAT mean combined verbal and math scores for the Classes of 1975 to 2005.

The SAT scores attained by the MCPS Class of 2005 were particularly noteworthy because the group of test takers was larger and more diverse than ever before. The MCPS Class of 2005 had the highest number (7,355) of SAT test takers in MCPS history (Appendix B). Nationally, increases in SAT participation are associated with decreases in mean SAT scores (Berliner & Biddle, 1995; College Board, 2002, 2005; Powell & Steelman, 1996; Smith, et. al, 1996; Whittington, 2004). However, this was not the case for the MCPS Class of 2005, who maintained the record level of performance set last year.

Increases in the SAT participation rates of African American and Hispanic students have outpaced those of Asian American and White students. SAT participation rates of students who received Free and Reduced-price Meals System (FARMS), special education, and limited English proficiency (LEP) services also have outpaced those of the district. Compared with the Class of 2004, increases in SAT participation for the Class of 2005 were highest for African American (+6.2 percentage points) and Hispanic students (+8.4 percentage points), and for students who received services for FARMS (+5.7 percentage points), special education (+7.7 percentage points), and LEP (+12.9 percentage points).

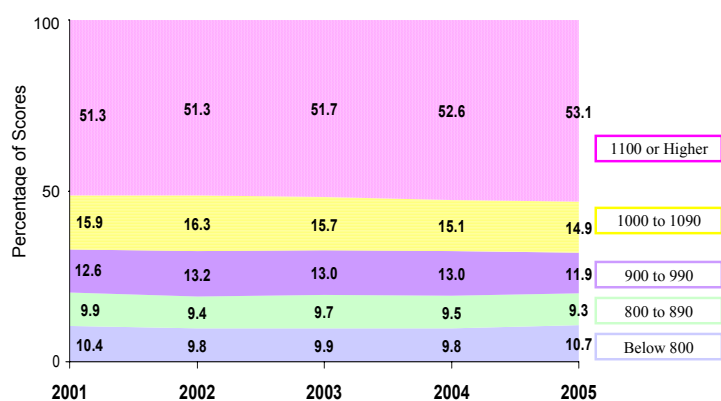


Figure 2. Percentage of SAT test takers in the Classes of 2001 to 2005 with SAT combined verbal and math scores in various performance bands.

A significant percentage of all students attained SAT combined verbal and math scores in the performance band 1100 or higher (Figure 2). More than 20% of test takers of all races/ethnicities in the Class of 2005 attained SAT combined verbal and math scores of 1100 or higher. Among students in the Class of 2005, 16% of test takers who received FARMS services, 23% of test takers who received special education services, and 7% of test takers who received LEP services received SAT combined verbal and math scores of 1100 or higher.

Students from many schools contributed to the noteworthy accomplishments attained by the district in 2005. The Class of 2005 SAT participation rate at every high school was 60% or higher. Of the 23 high schools in MCPS, 21 (91%) attained SAT mean combined verbal and math scores of 1000 or higher; 9 (39%) attained SAT mean combined verbal and math scores of 1100 or higher; and 3 (17%) attained SAT mean combined verbal and math scores of 1200 or higher (Appendix C).

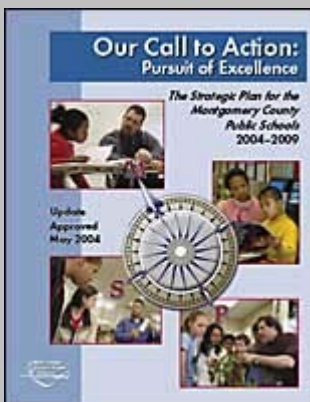
The Class of 2005 SAT accomplishments include increases in the following:

- SAT participation
  - Highest number (7,355) of SAT test takers in MCPS history
  - Participation rates at every high school of 60% or higher
- SAT mean combined verbal and math scores
  - Most recent (1102) and highest (1114) scores for all MCPS not significantly different from the records set by the Class of 2004
  - Most recent (1121) and highest (1133) scores for males highest in MCPS history
  - Most recent (1163) and highest (1177) scores for Asian American students highest in MCPS history
  - Most recent (1174) and highest (1185) scores for White students highest in MCPS history
  - Twenty-one high schools (91%) with scores of 1000 or higher
  - Nine high schools (39%) with scores of 1100 or higher
  - Three high schools (17%) with scores of 1200 or higher

# An Examination of the SAT Results for the Class of 2005

Clare Von Secker, Ph.D.

## Background



SAT participation and performance are data points that measure MCPS' attainment of the first goal of *Our Call to Action*—Ensure success for every student.

Goal 1 of the Montgomery County Public Schools (MCPS) Strategic Plan, *Our Call to Action: Pursuit of Excellence* (MCPS, 2004), is to ensure success for every student. One measure of success for students who plan to attend college is students' preparation for college-level course work. The SAT is designed to measure attainment of skills considered essential for academic success in college (College Board, 2001). Thus, student participation and performance on the SAT are important data points for measuring MCPS attainment of Goal 1. This report examines SAT participation and the performance for students in the MCPS Class of 2005.

## Changes to the SAT

The Class of 2005 was the first to take both “old” and “new” versions of the SAT. Although the new SAT is not expected to be harder, it is longer and measures different content and skills (College Board, 2005).

### *A Description of the “Old” SAT*

The old SAT, administered until January 2005, was a norm-referenced standardized test that measured verbal and mathematics skills that had been identified as essential for college-level academic study (College Board, 2005). Each SAT subtest score was reported in increments of 10 on a scale that ranged from 200 to 800. Each scaled score represented a particular level of verbal or mathematics achievement.

The primary focus of the verbal portion of the SAT was critical reading and the use of language. Students read and analyzed fiction and nonfiction passages from natural sciences, social studies, and the humanities; evaluated patterns in sentences; and focused on relationships between words (analogies). The math portion of the SAT emphasized problem solving. Students applied mathematical rules, formulas, and basic facts of arithmetic, algebra, and geometry in flexible ways to solve nonroutine problems or to make quantitative comparisons (College Board, 2001).

### *A Description of the “New” SAT*

Beginning in March 2005, the College Board commenced administration of the “new” SAT. The new SAT, which is intended for the Class of 2006, is designed to align better with current curriculum and institutional practices in high school and college (College Board, 2004; Fiske & Hammond, 2005; Kobrin & Schmidt, 2005). As with the old SAT, subtest scores are reported in increments of 10 on scales that range from 200 to 800. The new SAT replaced the verbal subtest with the critical reading subtest that added shorter reading passages and eliminated the analogies items. The math subtest content was expanded to include Algebra 2 and eliminated quantitative comparisons. In addition to changes to the verbal and mathematics subtests, the new SAT has a writing subtest that includes an essay in response to a prompt and multiple choice items that measure how well students use standard written English.

#### Changes to the SAT content include

- replacing the verbal subtest with a critical reading subtest that places more emphasis on critical reading,
- adding Algebra 2 content to the math subtest,
- adding a new writing subtest with a student-written essay, and
- eliminating analogies and quantitative comparisons.

### **Interpreting SAT Participation and Performance**

SAT scores are intended to be combined with other relevant academic and personal information to help students, parents, and guidance counselors better understand and interpret students’ qualifications and preparation for college; and to guide decisions about course selection, postsecondary plans, college majors, and careers (College Board, 2002; Educational Testing Service, 2003). They provide a uniform measure of students’ knowledge and skills that is different from other, more subjective, indicators of student success such as high school records (Camara & Echternacht, 2000; Camara, Kimmel, Scheuneman, & Sawtell, 2003). Thus, SAT scores contribute valuable and unique information that enhances the effectiveness of the screening processes used to select candidates for college admission.

The College Board strongly discourages using SAT scores to evaluate teachers, schools, school districts, or other educational units because the SAT is intended as a measure of individual, as opposed to group, performance (College Board, 2002). Aggregate test data, including mean scores of districts, schools, and subgroups of students, may validly be used as an indicator of group differences only when considered in combination with other conditions that affect the educational outcomes. Students’ demographic characteristics, prior performance, course-taking

patterns, family income, level of parental education, and other cognitive and noncognitive factors are strongly associated with educational experiences that influence average SAT scores.

The SAT scores of students with comparable school records may vary widely because of differences in teacher grading practices, school course offerings, or other factors (Brookhart, 1994; Camara & Echternacht, 2000; Camara, Kimmel, Scheuneman, & Sawtell, 2003; Hardy, 1997; Stiggins, Frisbie, & Griswold, 1989). Even among students with similar high school records, there are long-standing national differences in the SAT scores of students who differ because of demographic status, family background, level of parental education, or economic advantage (Burton, 2003; Camara & Schmidt, 1999; Nettles, Millett, & Ready, 2003).

The SAT scores reported by the College Board for the national samples of college-bound seniors in the Classes of 2001 to 2005 have held steady for the past five years (Appendix A). Nationally, the SAT mean combined verbal and math scores of Asian American and White students have been about 200 points higher than those of African American students and more than 100 points higher than those of Hispanic students (Figure 3).

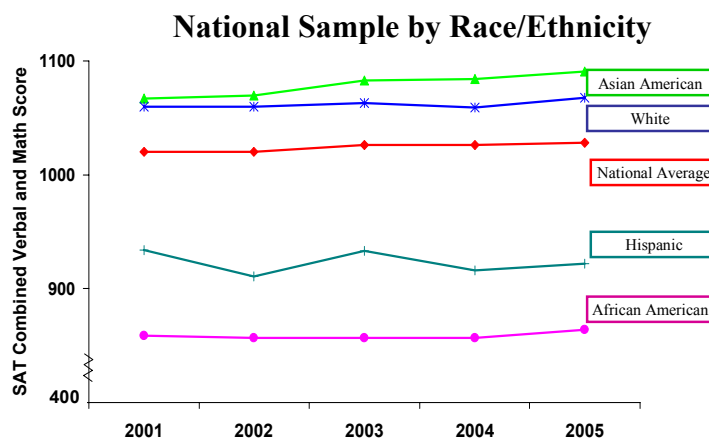


Figure 3. SAT mean combined verbal and math scores for college-bound seniors in the U.S. Classes of 2001 to 2005 by race/ethnicity (national sample).

This report compares SAT participation and performance of the Class of 2005 with that of the previous four MCPS graduating classes. SAT participation and performance data are disaggregated by gender; race/ethnicity; and participation in FARMS, special education, and LEP services. Results are also disaggregated by high school. This information can be used to make finer-grained comparisons about students' relative performance than are possible from data provided in the national and state summary reports produced by the College Board.

Nationally, there are differences of almost 200 points in the mean SAT combined verbal and math scores of students who are members of different racial/ethnic groups.

## Methodology

The following are key research questions addressed in this report, along with the selection criteria that were used for identifying the students who were included in the SAT analyses and guidelines for interpreting the results.

### Key Research Questions

Three primary questions about SAT participation and performance for the MCPS Class of 2005 that were the focus of this report were as follows:

1. What was the SAT participation rate for the Class of 2005? How has SAT participation changed over time?
2. What was the mean SAT performance for the Class of 2005? How has mean SAT performance changed over time?
3. What were the ranges of SAT performance (performance bands) for the Class of 2005? How have these performance bands changed over time?

### Description of SAT Test Takers

MCPS reports SAT records provided by the College Board for MCPS-verified diploma-bound students who were enrolled during June of their graduation year. Students' gender, race/ethnicity, and Grade 12 participation in FARMS, special education, or LEP services were taken from MCPS records. Students are counted once, regardless of how many times they took the SAT. In this report, SAT participation includes all MCPS-verified students in the Classes of 2001 to 2005 who took an SAT. The SAT scores described in this report are based on results for 99.1% of test takers in the Class of 2005 whose most recent SAT scores were obtained on the old version of the SAT.

### Interpreting SAT Mean Scores and Performance Bands

Unless otherwise stated, the SAT scores described in this report are students' most recent SAT mean scores. The most recent SAT mean scores are useful for comparing MCPS results with the national and state data reported by the College Board.

In response to increased interest from the MCPS community, this report also presents the highest SAT mean scores. These highest scores are obtained from the testing administration in which the student earned his or her highest SAT combined verbal and math score. The highest scores are reflective of students' best efforts. For students who took the SAT one time only, the most recent and highest SAT scores are the same.

In addition to mean scores, SAT results are reported in terms of performance bands that show the distribution of student performance. The top band contains students with SAT combined verbal and math scores of 1100 or higher. This threshold was selected as an indication of preparation

for college level work. For example, Montgomery College exempts students with SAT verbal or math scores of 550 (combined 1100) from placement testing (Montgomery College, 2004). Exempt students can enroll immediately in college-level courses, while non-exempt students may need to enroll in remedial courses. The bottom performance band of SAT combined verbal and math scores of 800 or lower includes test takers who are likely to need academic support and remediation upon entry to college. For SAT combined verbal and math scores between 800 and 1100, performance bands are described in increments of 100 and represent increasing levels of performance.

### **Description of Appendices**

Four appendices provide the following aggregated and disaggregated information:

1. Comparisons of the most recent SAT verbal and math scores for MCPS and the nation disaggregated by gender and race/ethnicity (Appendix A)
2. Comparisons of SAT participation and most recent and highest SAT mean scores for all MCPS students disaggregated by gender; race/ethnicity; and participation in FARMS, special education, and LEP services (Appendix B)
3. Comparisons of SAT participation and most recent and highest SAT mean scores by high school (Appendix C)
4. SAT participation and performance of students in the Classes of 2001 to 2005 who attended each high school disaggregated by gender; race/ethnicity; and participation in FARMS, special education, and LEP services (Appendix D)

## Results

Deciding to take a college admissions test is an important step in the process of exploring and planning for postsecondary goals. Taking the SAT opens doors for students by increasing their awareness of college admission procedures, college programs, college majors, and career interests. The SAT scores provide data that are useful for helping students, parents, and others understand students' preparedness for college or the workplace relative to other test takers (College Board, 2002, 2005).

### SAT Participation

The Class of 2005 had the highest percentage (76.5) and number (7,355) of MCPS-verified SAT test takers in MCPS history (Table 1). The one-year gains in SAT participation for the Classes of 2004 to 2005 reflect increases in most student subgroups. The largest one-year increases in SAT participation were for African American (+6.2 percentage points) and Hispanic (+8.4 percentage points) students; and for students who received services for FARMS (+5.7 percentage points), special education (+7.7 percentage points), and LEP (+12.9 percentage points).

Table 1  
Percentage and Number of Students in the Classes of 2001 to 2005  
Who Took the SAT by Demographic Group

Demographic Group	SAT Participation % (N) Graduating Class					1-Year Change (2004 to 2005)
	2001	2002	2003	2004	2005	
All MCPS	72.4 (6,064)	74.0 (6,409)	73.5 (6,762)	73.1 (6,892)	76.5 (7,355)	+3.4*
Male	68.9 (2,897)	70.4 (3,138)	70.5 (3,229)	70.0 (3,271)	73.5 (3,553)	+3.5*
Female	75.9 (3,167)	77.8 (3,271)	76.4 (3,533)	76.1 (3,621)	79.6 (3,802)	+3.5*
African Am.	58.1 (984)	59.4 (1,034)	64.3 (1,111)	60.7 (1,165)	66.9 (1,382)	+6.2*
Asian Am.	84.4 (1,048)	86.5 (1,170)	84.3 (1,167)	84.6 (1,218)	88.0 (1,308)	+3.4*
Hispanic	44.4 (479)	47.5 (531)	42.5 (522)	43.4 (566)	51.8 (713)	+8.4*
White	81.5 (3,538)	82.7 (3,659)	81.5 (3,947)	82.7 (3,933)	84.4 (3,931)	+1.7*
FARMS	47.1 (397)	46.1 (385)	45.4 (428)	48.8 (500)	54.5 (555)	+5.7*
Special Ed.	39.0 (315)	41.1 (329)	41.6 (369)	38.3 (342)	46.0 (379)	+7.7*
LEP	30.4 (109)	28.6 (117)	19.2 (75)	25.9 (104)	38.8 (196)	+12.9*

\* Statistically significant ( $p < .05$ )



### SAT Participation by Gender

Over the past five years, females have continued to take the SAT at rates greater than those of males in the same graduating class (Figure 4). SAT participation for females (79.6%) and males (73.5%) in the Class of 2005 climbed to historic highs. The difference of 6.1 percentage points in the participation rates of males and females in the Class of 2005 was about the same as the gender difference in participation (7.0 percentage points) for the Class of 2001.

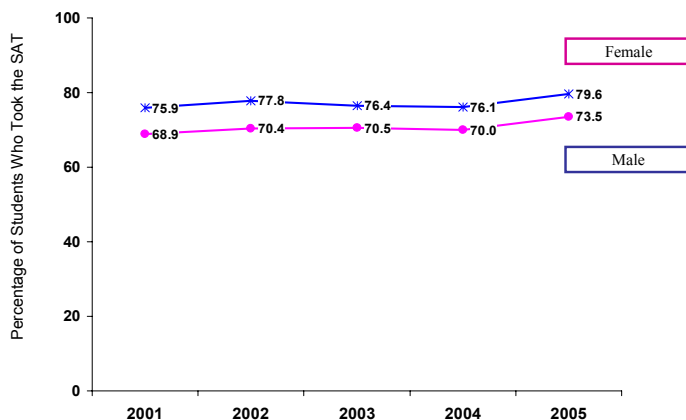


Figure 4. Percentage of students in the Classes of 2001 to 2005 who took the SAT by gender.

### SAT Participation by Race/Ethnicity

SAT participation rates for the Class of 2005 reached MCPS historic highs for all racial/ethnic groups (Figure 5). Participation rates of Asian American (88.0%) and White (84.4%) students were higher than those of African American (66.9%) and Hispanic (51.8%) students. However, these differences have narrowed since 2001 because increases in the SAT participation rates of African American (+8.8 percentage points) and Hispanic (+7.4 percentage points) students have outpaced those of Asian American (+3.6 percentage points) and White (+2.9 percentage points) students.

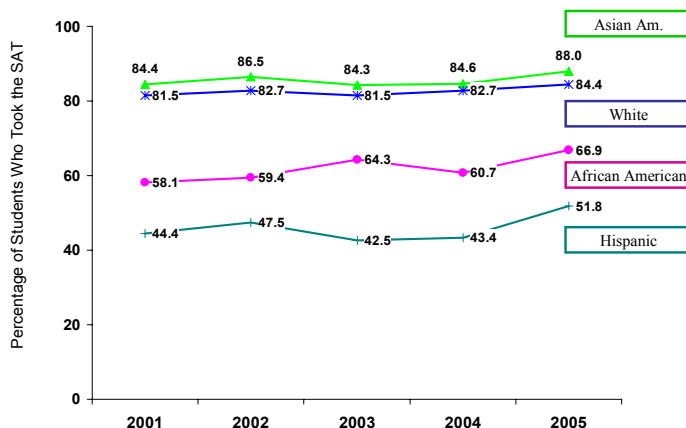


Figure 5. Percentage of students in the Classes of 2001 to 2005 who took the SAT by race/ethnicity.

*SAT Participation by Service Group*

The numbers and percentages of SAT test takers in the Class of 2005 who received FARMS, special education, or LEP services in Grade 12 were higher than for any other MCPS class (Appendix B). The Class of 2005 was the first in which more than one half (54.5%) of students who received FARMS services, almost one half (46.0%) of students who received special education services, and more than one third (38.8%) of students who received LEP services took the SAT.

Over the past five years, increases in the SAT participation rates of students who received FARMS, special education, and LEP services have outpaced the district average increases. The MCPS overall SAT participation rate for the Class of 2005 was 4.1 percentage points higher than for the Class of 2001. At the same time, SAT participation rates for the Class of 2005 were 7.4 percentage points higher for students who received FARMS services, 7.0 percentage points higher for students who received special education services, and 8.4 percentage points higher for students who received LEP services than were SAT participation rates for students in the Class of 2001 who received the same services (Figure 6).

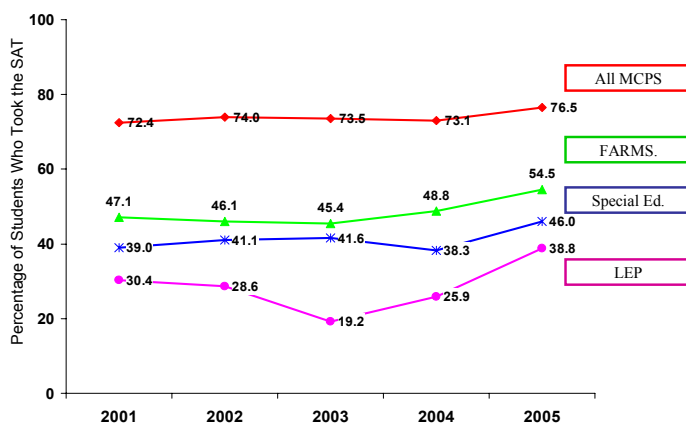


Figure 6. Percentage of students in the Classes of 2001 to 2005 who took the SAT by service group.

The SAT participation rates for the Class of 2005 were the highest in MCPS history. More than three fourths of all seniors took the SAT.

Racial/ethnic differences in SAT participation narrowed over the past five years as the increases in SAT participation of African American and Hispanic students outpaced those of Asian American and White students.

Over the past five years, increases in the SAT participation of students who received FARMS, special education, and LEP services outpaced the MCPS average increase.

## SAT Mean Scores

MCPS SAT performance has improved over the past five years, and exceeds SAT scores attained more than 30 years ago when the participation rate was lower and fewer test takers were affected by poverty or limited English proficiency (MCPS, 2004). MCPS is now among the largest and most diverse school districts in the nation (MCPS, 2004). Nationally, increases in SAT participation are associated with decreases in SAT mean scores (Berliner & Biddle, 1995; College Board, 2002; Powell & Steelman, 1996; Smith, et. al, 1996; Whittington, 2004). In MCPS, however, SAT performance for the Class of 2005 held steady at historic high levels even though SAT participation increased significantly.

### *District Scores*

The SAT mean combined score of 1101 reported by the College Board for the MCPS Class of 2005 was statistically significantly higher than the national mean score of 1028 (Appendix A). The most recent SAT mean combined verbal and math score for MCPS-verified students in the Class of 2005 was 1102. The highest SAT mean combined score from a single administration, a result that reflects the best effort among students, was 1114. The most recent and highest SAT mean scores of MCPS-verified students in the Class of 2005 were the second highest in MCPS history, and not statistically significantly different than the record scores of 1103 and 1115 set by the MCPS Class of 2004 (Table 2).

Table 2  
Most Recent and Highest SAT Scores for Students in the MCPS  
Classes of 2001 to 2005

Graduating Class	Most Recent SAT Mean Scores			Highest SAT Mean Scores		
	SAT Verbal + Math <sup>a</sup>	Verbal	Math	SAT Verbal + Math <sup>a</sup>	Verbal	Math
2001	1093	537	557	1106	543	563
2002	1097	536	561	1109	541	567
2003	1094	535	558	1107	543	564
2004	1103	542	561	1115	548	567
2005	1102	541	560	1114	548	566

<sup>a</sup> The combined score may differ by one point from the sum of the verbal and math subtest scores because of rounding.

### *Scores by Gender and Race/Ethnicity*

The MCPS Class of 2005 most recent and highest SAT mean combined verbal and math scores for students of different genders and races/ethnicities were consistent with those observed for the four prior graduating classes, with males outscoring females and Asian American and White students outscoring Hispanic and African American students (Appendix B). However, examination of SAT performance by gender and race/ethnicity simultaneously revealed gains in performance that were not otherwise evident (Table 3).

On average, the SAT scores of male students improved by 1 point between 2004 and 2005, a difference that was not statistically significant. However, the flat average SAT performance was due to statistically significantly lower SAT scores attained by Hispanic males (-9 points) in the Class of 2005 that offset gains among Asian American males (+8 points) and White males (+10 points). Among male students, SAT scores held steady between 2004 and 2005 only for African Americans.

Table 3  
Most Recent SAT Scores for Students in the MCPS  
Classes of 2001 to 2005 by Gender and Race/Ethnicity

Student Group	Most Recent SAT Mean Combined Verbal and Math Scores					1-Year Change (2004 to 2005)
	Graduating Class					
	2001	2002	2003	2004	2005	
Male	1113	1112	1110	1120	1121	+1
Female	1076	1082	1079	1088	1084	-4*
African Am.	911	906	917	917	917	0
Male	927	910	900	917	917	0
Female	900	903	929	917	917	0
Asian Am.	1127	1138	1127	1160	1163	+3*
Male	1134	1154	1134	1168	1176	+8*
Female	1119	1124	1120	1152	1150	-2
Hispanic	949	950	945	944	942	-2
Male	980	973	954	974	963	-9*
Female	923	928	938	917	923	+6*
White	1154	1159	1153	1163	1174	+11*
Male	1167	1169	1175	1178	1188	+10*
Female	1142	1148	1134	1149	1160	+11*

\* Statistically significant ( $p < .05$ )

On average, SAT scores of female students dropped by 4 points between 2004 and 2005, a difference that was statistically significant (Table 3). However, between 2004 and 2005 there were statistically significant increases in the SAT scores of Hispanic females (+6 points) and White females (+11 points). There were no statistically significant differences in the SAT scores attained by African American females (0 points) or Asian American females (-2 points) in the Class of 2005 compared with their counterparts in the Class of 2004.

The disparity between the overall and subgroup changes in mean SAT scores of female students was the result of a mathematical effect known as *Simpson's Paradox*. *Simpson's Paradox* can be understood by examining two things—changes in SAT participation and relative SAT performance of females of different races/ethnicities. Compared with the Class of 2004, a

greater proportion of female SAT test takers in the Class of 2005 were African American or Hispanic students, two groups whose mean SAT combined verbal and math scores are below the district average. The greater number of low SAT scores relative to high SAT scores resulted in a statistically significant decrease in the overall mean for females, even though SAT performance of females of different races/ethnicities held steady or improved significantly.

### *Scores by Service Group*

The most recent SAT mean scores for students who received FARMS, special education or LEP services are presented in Table 4. SAT scores were significantly lower for students in the Class of 2005 who received services for FARMS (-16 points) or special education (-13 points) than were the scores for students in the Class of 2004 who received those services. These results, while discouraging, are not unexpected given the sharp increases in SAT participation for students who received FARMS or special education services (Berliner & Biddle, 1995; Powell & Steelman, 1996; Whittington, 2004)

Students in the Class of 2005 who received LEP services had statistically significantly higher mean SAT scores (+40 points) than students in the Class of 2004 who received LEP services. The SAT performance of students in the Class of 2005 not only recovered from the dip observed for the Class of 2004, but returned to the levels observed for the four previous graduating classes when only half as many students took the SAT.

Table 4  
Most Recent SAT Scores for Students in the MCPS  
Classes of 2001 to 2005 by Service Group

Student Group	Most Recent SAT Mean Combined Verbal and Math Scores					1-Year Change (2004 to 2005)
	Graduating Class					
	2001	2002	2003	2004	2005	
All MCPS	1093	1097	1094	1103	1102	-1
FARMS	875	890	878	894	878	-16*
Special Ed.	932	908	898	924	911	-13*
LEP	795	779	811	757	797	+40*

\* Statistically significant ( $p < .05$ )

### **Performance Bands**

Reporting SAT results in terms of mean scores tells only one facet of the SAT performance story. Additional understanding of SAT performance can be gained by examining changes in the percentage of students whose combined verbal and math scores were in various SAT performance bands. Examination of SAT performance bands for the Class of 2005 revealed that more students than in any previous MCPS graduating class attained SAT scores of 1100 or

higher. These students are likely to be successful in college and obtain college degrees (Kirst, 1998; Marchant & Paulson, 2001, 2005; Rosenbaum, 2001; U.S. Department of Education, 2001).

The MCPS Class of 2005 had the highest number (3,871) and percentage (53.1%) of students with SAT scores of 1100 or higher than at any time in MCPS history (Figure 7). This finding is noteworthy because test takers in the Class of 2005 included more than three fourths of the class, a level of participation that typically is associated with lower overall performance. Students from every demographic group attained SAT scores of 1100 or higher (Appendix B).

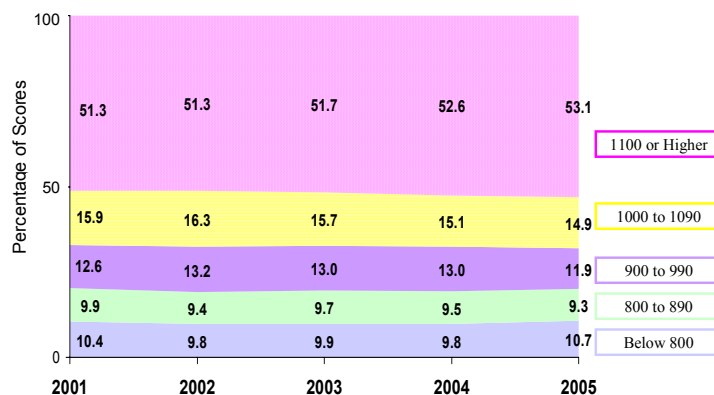


Figure 7. Percentage of SAT test takers in the Classes of 2001 to 2005 with SAT combined verbal and math scores in various performance bands.

### Performance Bands by Gender

The Class of 2005 had the highest number of males (2,005) and females (1,866) with SAT combined verbal and math scores of 1100 or higher than at any time in MCPS history. Among test takers in the Class of 2005, 57% of males and 50% of females had SAT scores of 1100 or higher (Figure 8).

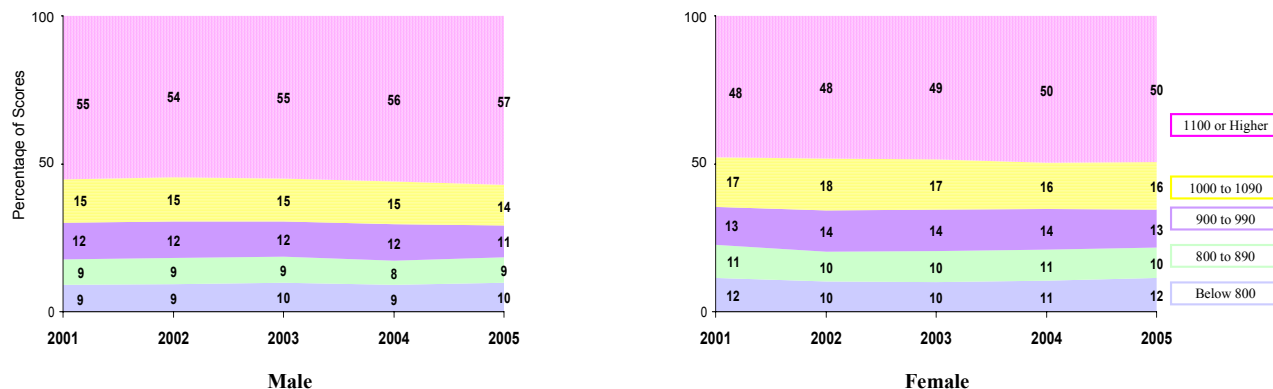


Figure 8. Percentage of SAT test takers in the Classes of 2001 to 2005 with SAT combined verbal and math scores in various performance bands by gender.

*Performance Bands by Race/Ethnicity*

For the Class of 2005, more than 20% of test takers in every racial/ethnic group attained SAT scores of 1100 or higher (Figure 9). The Class of 2005 had the greatest number of African American (274), Asian American (826), Hispanic (157), and White (2,604) test takers with SAT scores of 1100 or higher than at any time in the past five years. Also, the Class of 2005 had the greatest percentage of African American (20%), Asian American (63%), and White (67%) test takers with SAT scores of 1100 or higher than at any time in the past five years.

The percentage of Hispanic test takers in the Class of 2005 who attained SAT scores of 1100 or higher (22%) was slightly lower than the percentage for the past five years. The drop in the percentage of Hispanic test takers with SAT combined scores of 1100 or higher was a result of increases in SAT participation among Hispanic students with SAT combined scores below 800, and not the result of lower performance of all Hispanic test takers (Figure 9).

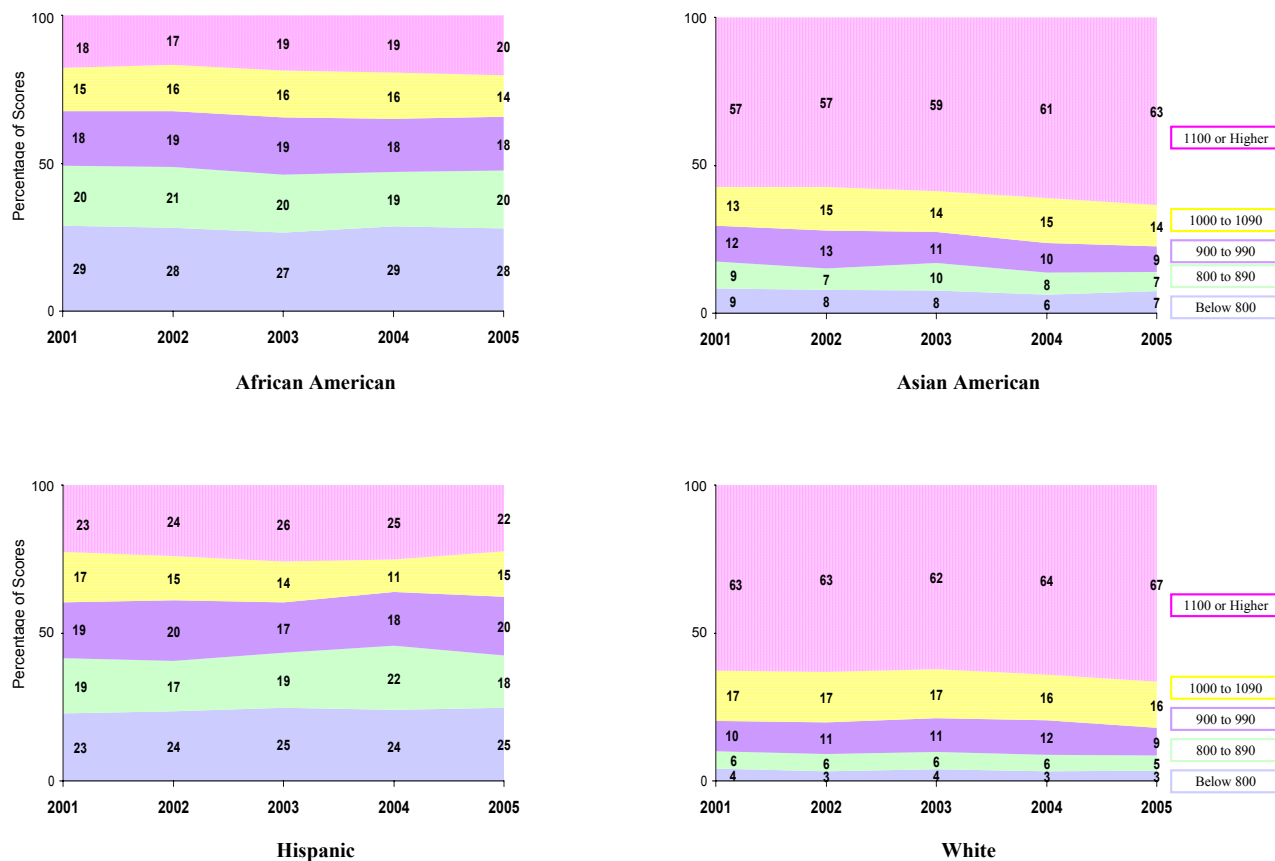


Figure 9. Percentage of SAT test takers in the Classes of 2001 to 2005 with SAT combined verbal and math scores in various performance bands by race/ethnicity.

*Performance Bands by Service Group*

Among students in the Class of 2005, 16% of test takers who received FARMS services, 23% of test takers who received special education services, and 7% of test takers who received LEP services attained SAT scores of 1100 or higher (Figure 10). This finding is noteworthy because it occurred during the same year that SAT participation climbed to MCPS historic highs for students who received FARMS, special education, and LEP services.

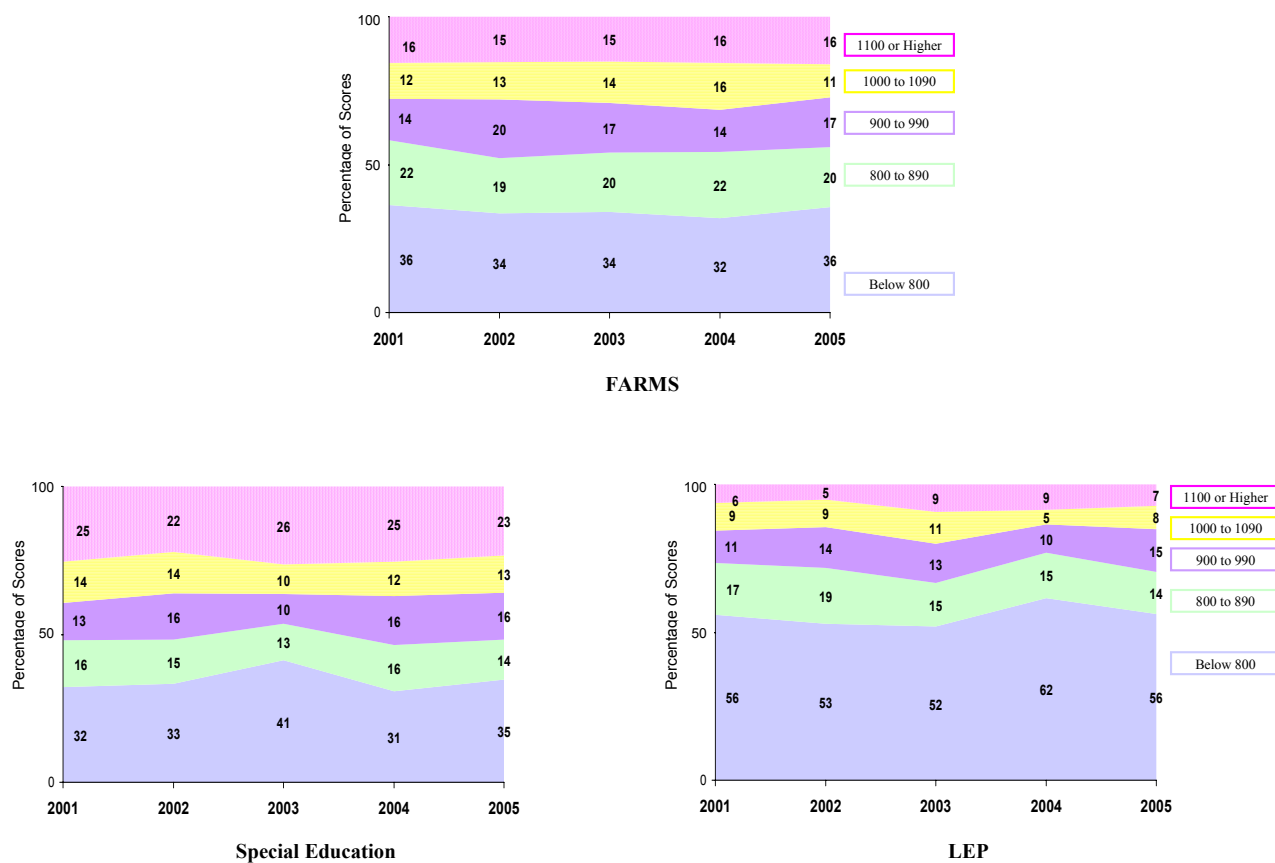


Figure 10. Percentage of SAT test takers in the Classes of 2001 to 2005 with SAT combined verbal and math scores in various performance bands by service group.

There continue to be differences in SAT scores of students by gender, race/ethnicity, and service group. However, even with increased participation, the percentages of students with SAT scores of 1100 or higher have held steady over the past five years.



## Discussion

MCPS is making progress toward achieving the Strategic Plan milestone of increasing SAT participation and performance. Although a more diverse group of students took the SAT, the SAT mean combined verbal and math score for the MCPS Class of 2005 was the second highest in MCPS history, and not statistically significantly different from the record high set for MCPS by the Class of 2004. MCPS students of each racial/ethnic group continued to be as much as 100 points higher than the national averages for those groups (Appendix A). This finding is noteworthy because in districts where participation is higher and more diverse the mean overall and subgroup SAT scores are typically close to the national averages (College Board, 2005).

The SAT combined verbal and math score of 1101 reported by the College Board for the MCPS Class of 2005 was statistically significantly higher than the national SAT mean combined score of 1028. The most recent SAT mean combined verbal and math score for MCPS-verified students in the Class of 2005 was 1102. The highest SAT combined mean score from a single administration, a result that reflects the best effort among MCPS-verified students, was 1114. The most recent and highest SAT mean scores of 1101/1102 and 1114 were the second highest in more than 30 years, and not statistically significantly different than the records of 1102/1103 and 1115 set by the MCPS Class of 2004.

The MCPS Class of 2005 had the highest percentage (76.5) and number (7,355) of MCPS-verified SAT test takers in MCPS history. The Class of 2005 SAT participation rate at every high school was 60% or higher. Of the 23 high schools in MCPS, 21 (91%) attained mean SAT combined verbal and math scores of 1000 or higher; 9 (39%) attained mean SAT scores of 1100 or higher; and 3 (17%) attained mean SAT scores of 1200 or higher (Appendix C).

The MCPS Class of 2005 had more students with combined verbal and math scores of 1100 or higher than any graduating class in MCPS history. More than 20% of students of all races/ethnicities in the Class of 2005 attained combined SAT scores of 1100 or higher. In the Class of 2005, 23% of students who received special education services attained SAT scores of 1100 or higher.

SAT participation has risen to historic highs for all groups of students. Compared with the Class of 2004, increases in SAT participation for the Class of 2005 were highest for African American (+6.2 percentage points) and Hispanic (+8.4 percentage points) students, and for students who received services for FARMS (5.7 percentage points), special education (+7.7 percentage points), and LEP (+12.9 percentage points). In 2005, every MCPS high school attained SAT participation rates of 60% or higher (Appendix C).

While MCPS is making progress at increasing SAT participation and performance, some challenges remain. There remains a wide variance in the SAT participation and performance associated with gender, race/ethnicity, or service group. There is also a wide variation in the SAT participation and performance of students who attend different high schools. MCPS district leaders and school staff are working together to meet these challenges and continuously improve SAT participation and performance.

## References

- Berliner, D. C. , & Biddle, B. J. (1995). *The manufactured crisis*. New York, NY: Addison-Wesley.
- Brookhart, S.A. (1994). Teachers' grading: Practice and theory. *Applied Measurement in Education*, 7, 279–201.
- Burton, P. E. (2003). *Parsing the achievement gap: Baselines for tracking progress*. Princeton, NJ: Educational Testing Service.
- Camara, W., & Echternacht, G. (2000.) *The SAT I and high school grades: Utility in predicting success in college*. New York: College Entrance Examination Board.
- Camara, W., Kimmel, E., Scheuneman, J., & Sawtell, E. A. (2003). Whose grades are inflated? *Research Report No. 2003-4*. New York: College Entrance Examination Board.
- Camara, W. J., & Schmidt, A. E. (1999). Group differences in standardized testing and stratification. *Research Report 99–5*. New York: College Entrance Examination Board.
- College Board (2005). *The new SAT: A Guide for admission officers*. New York: The College Entrance Examination Board.
- College Board. (2004). *The new SAT: Implemented for the class of 2006*. New York: College Entrance Examination Board. <http://www.collegeboard.com>
- College Board. (2002). *Guidelines on the uses of College Board test scores and related data*. New York: The College Entrance Examination Board.
- College Board. (2001). *What does the SAT measure and why does it matter?* New York: The College Entrance Examination Board.
- Educational Testing Service. (2003). *2003 college-bound seniors: A profile of SAT program test takers*. New York: College Entrance Examination Board.
- Fiske, E. B., & Hammond, B. G. (2005). Inside the new SAT. *U.S. News and World Report*. <http://www.usnews.com>
- Hardy, L. (1997). Grade inflation: When everyone gets high marks, what's an A really worth? *The American School Board Journal*, 14, 28–31.
- Honawar, V. (2005a). Colleges Hesitate to Embrace SAT Writing Test. *Education Week*, 24(39), 5.
- Honawar, V. (2005b). NCTE is critical of new college-admissions essay tests. *Education Week*, 24(36), 5.
- Kirst, M. W. (1998). Bridging the remediation gap. *Education Week*, 8(1), 76, 52.
- Kobrin, J. L., & Schmidt, A. E. (2005). *The research behind the new SAT*. New York: The College Entrance Examination Board.
- Marchant, G. J., & Paulson, S. E. (2005). The relationship of high school graduation exams to graduation rates and SAT scores. *Education Policy Analysis Archives*, 13(6), 1–16, <http://epaa.asu.edu>

- Marchant, G. J., & Paulson, S. E. (2001). State comparisons of SAT Scores: Who's your test taker? *NASSP Bulletin*, 85(627), 62–74.
- Montgomery College. (2004). *Admission and registration*. [http://www.mc.cc.md.us/verified/InstitInfo\\_adminandreg\\_02.pdf](http://www.mc.cc.md.us/verified/InstitInfo_adminandreg_02.pdf)
- Montgomery County Public Schools (MCPS). (2004). *Our call to action: Pursuit of excellence. The strategic plan for the Montgomery County Public Schools 2003–2008*. Rockville, MD: MCPS. <http://www.mcps.k12.md.us>.
- Nettles, M. T., Millett, C., & Ready, D. D. (2003). Attacking the African American-white achievement gap on college admissions tests. *Brookings Papers on Education Policy: 2003*, 215–252.
- Powell, B., & Steelman, L. C. (1996). Bewitched, bothered, and bewildering: The use and misuse of state SAT and ACT scores. *Harvard Educational Review*, 66(1), 27–59.
- Rosenbaum, J. (2001). *Beyond college for all*. New York: Russell Sage.
- Smith, T. M., Young, B. A., Choy, S. P., Perie, M., Alsalam, N., Rollefson, M. R., & Bae, Y. (1996). *The Condition of Education 1996*. Washington, DC: National Center for Education Statistics.
- Stiggins, R. J., Frisbie, D.A., & Griswold, P. A. (1989). Inside high school grading practices: Building a research agenda. *Educational Measurement: Issues and Practices*, 8(2), 5–14.
- U.S. Department of Education (2003). *The condition of education 2003: Immediate transition to college*. Washington, DC: National Center for Education Statistics.
- U.S. Department of Education. (2001). *Digest of education statistics: 2000*. Washington, DC: National Center for Education Statistics.
- Whittington, D. (2004). The achievement gap: Should we rely on SAT scores to tell us anything about it? *Education Policy Analysis Archives*, 12(12). <http://epaa.asu.edu/epaa>

THIS PAGE IS LEFT BLANK INTENTIONALLY

**Appendix A**  
**Comparison of MCPS and National SAT Scores**

**Table A1**  
**Mean Most Recent SAT Scores for the**  
**Classes of 1975 to 2005**

Graduating Class	MCPS Results Reported by the College Board				National Results Reported by the College Board		
	Combined	Verbal <sup>a</sup>	Math	N Tested	Combined	Verbal <sup>a</sup>	Math
1975	1063	541	522	5,988	1010	512	498
1976	1065	539	526	6,289	1006	509	497
1977	1068	540	528	5,986	1003	507	496
1978	1068	541	527	5,823	1001	507	494
1979	1056	533	523	5,999	998	505	493
1980	1058	533	525	6,179	994	502	492
1981	1058	533	525	5,852	994	502	492
1982	1059	534	525	5,764	997	504	493
1983	1066	537	529	5,383	997	503	494
1984	1072	539	533	5,333	1001	504	497
1985	1087	545	542	5,374	1009	509	500
1986	1080	542	538	5,418	1009	509	500
1987	1084	544	540	5,814	1008	507	501
1988	1078	540	538	5,649	1006	505	501
1989	1088	543	545	5,323	1006	504	502
1990	1085	539	546	4,814	1001	500	501
1991	1080	538	542	4,730	999	499	500
1992	1086	541	545	4,774	1001	500	501
1993	1085	539	546	4,717	1003	500	503
1994	1085	537	548	4,738	1003	499	504
1995	1087	540	547	5,044	1010	504	506
1996	1088	538	550	5,033	1013	505	508
1997	1092	539	553	5,271	1016	505	511
1998	1092	537	555	5,651	1017	505	512
1999	1096	540	556	5,802	1016	505	511
2000	1093	536	557	6,144	1019	505	514
2001	1092	536	556	6,348	1020	506	514
2002	1095	535	560	6,814	1020	504	516
2003	1094	535	559	7,172	1026	507	519
2004	1102	541	561	7,263	1026	508	518
2005	1101	541	560	7,843	1028	508	520

*Note:* College Board estimates for MCPS include students who reported that they were enrolled in MCPS at the time of testing but who were not MCPS-verified members of the MCPS Class of 2005.

**Table A2**  
**Mean Most Recent SAT Combined Verbal and Math Scores for the**  
**Classes of 1990 to 2005 by Gender**

Graduating Class	Male SAT Combined Verbal <sup>a</sup> and Math			Female Combined Verbal <sup>a</sup> and Math		
	Nation <sup>a</sup>	MCPS <sup>b</sup>		Nation	MCPS	
		SAT	Difference from Nation		SAT	Difference from Nation
1990	1026	1112	+86	979	1062	+83
1991	1023	1099	+76	977	1062	+85
1992	1025	1108	+83	980	1066	+86
1993	1028	1101	+73	981	1069	+88
1994	1024	1100	+76	984	1071	+87
1995	1030	1101	+71	992	1075	+83
1996	1034	1099	+65	995	1076	+81
1997	1037	1110	+73	997	1077	+80
1998	1040	1110	+70	998	1077	+79
1999	1040	1113	+73	997	1084	+87
2000	1040	1112	+72	1002	1079	+77
2001	1042	1113	+71	1000	1076	+76
2002	1041	1112	+71	1002	1082	+80
2003	1049	1110	+61	1006	1079	+73
2004	1049	1120	+71	1005	1088	+83
2005	1051	1121	+70	1009	1084	+75

<sup>a</sup> National results are provided by the College Board.

<sup>b</sup> MCPS mean most recent combined verbal and math scores are reported for SAT administered prior to March 2005.

**Table A3**  
**Mean Most Recent SAT Combined Verbal and Math Scores for the Classes of 1990 to 2005 by Race/Ethnicity**

Graduating Class	African American SAT Combined Verbal and Math				Asian American SAT Combined Verbal and Math				Hispanic SAT Combined Verbal and Math				White SAT Combined Verbal and Math			
	Nation	SAT	MCPS <sup>b</sup> Diff from Nation	N Tested	Nation	SAT	MCPS <sup>b</sup> Diff from Nation	N Tested	Nation <sup>a</sup>	SAT	MCPS <sup>b</sup> Diff from Nation	N Tested	Nation	SAT	MCPS <sup>b</sup> Diff from Nation	N Tested
1990	846	930	+84	517	1037	1099	+62	667	914	1022	+108	199	1037	1122	+85	2896
1991	845	909	+64	512	1040	1107	+67	739	912	1024	+112	227	1034	1118	+84	2722
1992	846	933	+87	548	1044	1123	+79	801	911	1012	+101	235	1037	1125	+88	2648
1993	851	934	+83	533	1048	1120	+72	846	915	1007	+92	219	1041	1128	+87	2488
1994	850	934	+84	596	1049	1129	+80	802	913	988	+75	290	1041	1133	+92	2388
1995	854	940	+86	704	1052	1124	+72	830	919	996	+77	312	1047	1137	+90	2602
1996	856	919	+63	668	1054	1133	+79	823	918	1002	+84	309	1049	1137	+88	2595
1997	857	933	+76	671	1056	1115	+59	900	917	1006	+89	336	1052	1144	+92	2642
1998	860	921	+61	716	1060	1135	+75	911	916	1003	+87	396	1054	1143	+89	2759
1999	856	922	+66	862	1058	1133	+75	1027	915	973	+58	402	1055	1150	+95	3238
2000	860	915	+55	971	1064	1125	+61	1054	918	960	+42	418	1058	1153	+95	3408
2001	859	911	+52	984	1067	1127	+60	1048	934	949	+15	479	1060	1154	+94	3538
2002	857	906	+49	1034	1070	1138	+68	1170	911	950	+39	531	1060	1159	+99	3659
2003	857	917	+60	1111	1083	1127	+44	1167	933	945	+12	522	1063	1153	+90	3947
2004	857	917	+60	1165	1084	1160	+76	1218	916	944	+28	566	1059	1163	+104	3933
2005	864	917	+53	1382	1091	1163	+72	1308	922	942	+20	713	1068	1174	+106	3931

<sup>a</sup>Weighted average of three Hispanic groups reported separately by the College Board for the nation.

<sup>b</sup> MCPS mean most recent combined verbal and math scores are reported for SAT administered prior to March 2005.



**Appendix B**  
**SAT Participation and Performance for**  
**the MCPS Classes of 2001 to 2005 by Demographic Group**

**Table B1**  
**SAT Participation Rates of MCPS Seniors in the Classes of 2001 to 2005 by Demographic Group**

Graduating Class	Participation Rate (%)					Number of Seniors					Number of Seniors Who Took SAT				
	MCPS Class					MCPS Class					MCPS Class				
	2001	2002	2003	2004	2005	2001	2002	2003	2004	2005	2001	2002	2003	2004	2005
All MCPS	72.4	74.0	73.5	73.1	76.5	8377	8660	9205	9434	9616	6064	6409	6762	6892	7355
Male	68.9	70.4	70.5	70.0	73.5	4205	4457	4580	4674	4837	2897	3138	3229	3271	3553
Female	75.9	77.8	76.4	76.1	79.6	4172	4203	4625	4760	4779	3167	3271	3533	3621	3802
African American	58.1	59.4	64.3	60.7	66.9	1693	1741	1729	1920	2066	984	1034	1111	1165	1382
Male	51.6	53.1	58.3	55.8	61.7	794	875	828	891	933	410	465	483	497	576
Female	63.8	65.7	69.7	64.9	71.1	899	866	901	1029	1133	574	569	628	668	806
Asian American	84.4	86.5	84.3	84.6	88.0	1242	1353	1384	1440	1486	1048	1170	1167	1218	1308
Male	80.7	82.3	83.4	81.9	87.8	646	666	717	725	760	521	548	598	594	667
Female	88.4	90.5	85.3	87.3	88.3	596	687	667	715	726	527	622	569	624	641
Hispanic	44.4	47.5	42.5	43.4	51.8	1078	1119	1228	1304	1377	479	531	522	566	713
Male	40.9	44.2	39.7	42.1	46.2	533	586	599	637	715	218	259	238	268	330
Female	47.9	51.0	45.2	44.7	57.9	545	533	629	667	662	261	272	284	298	383
White	81.5	82.7	81.5	82.7	84.4	4340	4425	4842	4756	4659	3538	3659	3947	3933	3931
Male	78.4	80.2	78.4	79.0	81.6	2220	2317	2424	2415	2409	1741	1858	1901	1908	1965
Female	84.8	85.4	84.6	86.5	87.4	2120	2108	2418	2341	2250	1797	1801	2046	2025	1966
FARMS	47.1	46.1	45.4	48.8	54.5	843	836	943	1024	1018	397	385	428	500	555
Special Ed.	39.0	41.1	41.6	38.3	46.0	807	801	887	893	824	315	329	369	342	379
LEP	30.4	28.6	19.2	25.9	38.8	358	409	391	401	505	109	117	75	104	196

*Note:* Participation rates for the Class of 2005 include SAT test takers who took any version (old or new) of the SAT.

**Table B2**  
**Mean Most Recent SAT Scores of MCPS Seniors in the Classes of 2001 to 2005 by Demographic Group**

Graduating Class	Mean SAT Combined Verbal & Math					Mean SAT Verbal Score					Mean SAT Mathematics Score				
	MCPS Class					MCPS Class					MCPS Class				
	2001	2002	2003	2004	2005	2001	2002	2003	2004	2005	2001	2002	2003	2004	2005
All MCPS	1093	1097	1094	1103	1102	537	536	535	542	541	557	561	558	561	560
Male	1113	1112	1110	1120	1121	539	536	537	543	543	574	576	573	576	578
Female	1076	1082	1079	1088	1084	535	536	534	540	540	541	546	545	547	544
African American	911	906	917	917	917	454	451	456	458	457	457	455	460	459	460
Male	927	910	900	917	917	456	446	442	453	448	471	464	458	464	468
Female	900	903	929	917	917	453	456	467	462	464	446	448	462	454	453
Asian American	1127	1138	1127	1160	1163	529	536	530	546	553	598	603	597	614	610
Male	1134	1154	1134	1168	1176	524	534	528	544	552	610	620	606	624	624
Female	1119	1124	1120	1152	1150	533	537	532	548	553	586	588	588	604	596
Hispanic	949	950	945	944	942	472	467	466	468	465	477	482	479	477	477
Male	980	973	954	974	963	481	473	464	477	470	499	499	489	497	494
Female	923	928	938	917	923	464	462	467	459	461	459	466	471	458	462
White	1154	1159	1153	1163	1174	571	570	568	576	581	584	589	585	587	594
Male	1167	1169	1175	1178	1188	569	567	573	576	580	597	602	602	602	608
Female	1142	1148	1134	1149	1160	572	573	564	576	581	570	575	569	573	579
FARMS	875	890	878	894	878	419	423	418	430	420	456	467	459	464	458
Special Ed.	932	908	898	924	911	460	443	442	454	450	472	465	455	470	461
LEP	795	779	811	757	797	331	319	333	319	344	463	461	478	438	453

*Note:* Sum of verbal and math scores may not equal combined score because of rounding.

**Table B3**  
**Mean Highest SAT Scores of MCPS Seniors in the Classes of 2001 to 2005 by Demographic Group**

Graduating Class	Mean SAT Combined Verbal & Math MCPS Class					Mean SAT Verbal Score MCPS Class					Mean SAT Mathematics Score MCPS Class				
	2001	2002	2003	2004	2005	2001	2002	2003	2004	2005	2001	2002	2003	2004	2005
All MCPS	1106	1109	1107	1115	1114	543	541	543	548	548	563	567	564	567	566
Male	1124	1123	1122	1130	1133	544	541	544	548	550	580	582	578	582	583
Female	1090	1095	1093	1101	1097	542	542	542	547	546	548	553	551	554	551
African American	924	917	930	929	932	461	455	462	463	465	463	462	467	466	466
Male	939	921	915	928	930	463	450	450	457	457	476	471	466	471	474
Female	914	915	941	930	933	460	459	472	468	472	454	455	469	462	461
Asian American	1143	1153	1144	1175	1177	537	543	540	554	561	606	611	604	621	617
Male	1149	1169	1151	1181	1190	532	541	539	551	561	617	629	612	630	629
Female	1137	1139	1137	1169	1164	543	544	542	556	560	594	595	595	613	604
Hispanic	961	959	958	954	952	478	472	475	473	471	483	487	483	481	481
Male	990	980	967	982	973	486	477	474	481	476	504	503	493	501	497
Female	936	939	951	928	934	471	468	477	466	467	465	471	474	463	468
White	1166	1170	1165	1175	1185	577	575	575	582	585	590	595	590	593	600
Male	1177	1181	1186	1188	1198	574	573	578	581	584	603	608	607	608	614
Female	1156	1160	1147	1162	1172	579	578	572	583	587	577	582	575	580	585
FARMS	887	902	891	905	891	424	428	428	435	428	462	474	463	470	463
Special Ed.	947	919	913	933	925	469	449	451	460	457	478	470	462	473	469
LEP	808	789	824	767	813	344	323	341	326	356	465	467	483	441	457

*Note:* The highest scores are those obtained from one administration of the old version of the SAT.

**Appendix C**  
**SAT Participation and Performance for**  
**the MCPS Classes of 2001 to 2005 by High School**

Table C1  
SAT Participation Rates of MCPS Seniors in the Classes of 2001 to 2005 by High School

Graduating Class	Participation Rate (%)					Number of Seniors					Number of Seniors Who Took SAT				
	MCPS Class					MCPS Class					MCPS Class				
	2001	2002	2003	2004	2005	2001	2002	2003	2004	2005	2001	2002	2003	2004	2005
MCPS	72.4	74.0	73.5	73.1	76.5	8377	8660	9205	9434	9616	6064	6409	6762	6892	7355
B-CC	84.2	79.4	82.9	82.6	87.0	285	282	316	362	370	240	224	262	299	322
Blair	65.0	68.6	66.5	67.2	71.1	589	653	692	668	755	383	448	460	449	537
Blake	75.8	72.6	77.2	77.4	80.3	277	347	338	359	437	210	252	261	278	351
Churchill	93.5	90.7	89.5	88.3	91.4	372	454	448	505	479	348	412	401	446	438
Damascus	75.7	79.2	72.2	73.7	77.1	342	384	453	422	410	259	304	327	311	316
Einstein	59.8	58.4	59.0	57.1	66.2	323	327	376	380	397	193	191	222	217	263
Gaithersburg	61.9	70.8	73.3	72.8	72.2	436	401	445	449	443	270	284	326	327	320
Kennedy	63.7	69.7	61.4	62.2	69.5	303	310	321	323	325	193	216	197	201	226
Magruder	72.6	72.9	69.5	66.1	70.0	391	414	453	492	496	284	302	315	325	347
Northwest	71.3	77.5	76.6	69.3	80.9	247	329	367	352	429	176	255	281	244	347
Paint Branch	79.6	81.7	78.8	75.1	77.7	377	355	364	381	408	300	290	287	286	317
Poolesville	75.2	76.8	79.5	81.8	84.5	145	168	176	176	168	109	129	140	144	142
Quince Orchard	74.7	75.8	76.4	79.5	78.5	395	413	398	419	414	295	313	304	333	325
R. Montgomery	71.2	77.2	72.9	77.0	79.3	393	394	380	430	416	280	304	277	331	330
Rockville	72.7	70.4	61.9	56.0	69.5	264	233	257	225	246	192	164	159	126	171
Seneca Valley	61.1	59.1	63.3	69.0	67.2	329	330	360	345	317	201	195	228	238	213
Sherwood	80.4	77.2	83.3	77.6	74.4	404	394	436	469	446	325	304	363	364	332
Springbrook	74.9	71.6	70.7	73.7	73.5	451	405	450	483	396	338	290	318	356	291
W. Johnson	80.1	81.0	82.0	83.0	81.8	386	368	410	423	473	309	298	336	351	387
Watkins Mill	61.5	68.0	69.4	60.8	66.0	436	437	425	451	400	268	297	295	274	264
Wheaton	58.4	52.7	58.5	60.7	62.5	296	262	311	270	315	173	138	182	164	197
Whitman	89.2	91.9	87.4	85.5	90.9	397	418	462	447	460	354	384	404	382	418
Wootton	89.0	89.8	90.7	92.7	90.6	392	459	453	479	544	349	412	411	444	493
Special Schools	10.2	2.4	5.3	1.6	11.1	147	123	114	124	72	15	3	6	2	8

Note: Participation rates for the Class of 2005 include SAT test takers who took any version (old or new) of the SAT.

Table C2  
 Mean Most Recent SAT Scores of MCPS Seniors in the Classes of 2001 to 2005 by High School

Graduating Class	Mean SAT Combined Verbal & Math					Mean SAT Verbal Score					Mean SAT Mathematics Score				
	MCPS Class					MCPS Class					MCPS Class				
	2001	2002	2003	2004	2005	2001	2002	2003	2004	2005	2001	2002	2003	2004	2005
MCPS	1093	1097	1094	1103	1102	537	536	535	542	541	557	561	558	561	560
B-CC	1139	1153	1139	1161	1183	564	572	566	576	588	575	581	573	585	595
Blair	1144	1135	1128	1148	1104	567	560	557	572	545	577	575	571	576	559
Blake	1033	1029	1042	1068	1053	520	511	518	538	524	513	518	524	529	528
Churchill	1211	1199	1200	1210	1223	590	582	582	587	595	621	617	618	623	628
Damascus	1074	1077	1087	1090	1096	523	520	527	532	534	551	556	560	558	562
Einstein	947	1012	998	990	1002	476	505	493	492	496	471	507	504	498	506
Gaithersburg	1050	1006	1036	994	1011	516	491	507	489	494	533	514	529	505	517
Kennedy	978	950	997	940	969	477	469	490	461	477	501	481	507	479	493
Magruder	1104	1114	1092	1104	1098	538	545	539	543	540	566	568	554	560	557
Northwest	1021	1042	1021	1042	1020	503	507	497	510	504	518	535	524	532	516
Paint Branch	1033	1064	1021	1036	1049	503	512	490	503	510	530	552	531	533	538
Poolesville	1121	1136	1082	1145	1124	553	559	538	563	552	568	577	545	581	571
Quince Orchard	1087	1061	1089	1102	1102	527	513	529	537	544	560	548	560	565	558
R. Montgomery	1209	1155	1200	1203	1185	600	568	592	594	588	609	587	607	610	597
Rockville	1050	1067	1063	1091	1046	519	523	520	537	516	531	544	543	554	529
Seneca Valley	1016	986	1020	1015	1042	493	480	499	493	505	522	506	521	522	537
Sherwood	1054	1056	1070	1072	1085	517	518	524	528	532	537	538	545	544	553
Springbrook	1031	1038	1041	1034	1019	504	503	509	513	498	527	536	532	521	520
W. Johnson	1150	1180	1154	1177	1189	560	578	566	581	587	591	601	587	597	602
Watkins Mill	1071	1081	1053	1049	1019	530	532	517	513	500	542	549	536	536	519
Wheaton	923	909	887	895	881	450	442	435	433	434	473	467	451	462	447
Whitman	1223	1242	1248	1234	1256	601	609	613	605	619	622	633	635	629	637
Wootton	1195	1191	1180	1207	1223	578	572	566	587	593	617	619	614	620	630
Special Schools	966		1017		844	497		477		431	469		540		413

Table C3  
Mean Highest SAT Scores of MCPS Seniors in the Classes of 2001 to 2005 by High School

Graduating Class	Mean SAT Combined Verbal & Math MCPS Class					Mean SAT Verbal Score MCPS Class					Mean SAT Mathematics Score MCPS Class				
	2001	2002	2003	2004	2005	2001	2002	2003	2004	2005	2001	2002	2003	2004	2005
MCPS	1106	1109	1107	1115	1114	543	541	543	548	548	563	567	564	567	566
B-CC	1152	1164	1150	1172	1196	570	575	572	581	595	582	589	578	591	602
Blair	1155	1144	1139	1155	1114	572	564	563	575	549	583	580	576	580	565
Blake	1045	1041	1055	1081	1064	525	517	526	545	531	520	525	529	536	533
Churchill	1222	1213	1213	1224	1232	594	588	588	594	598	628	625	624	630	634
Damascus	1086	1089	1099	1108	1109	529	527	534	540	540	557	562	565	568	568
Einstein	957	1023	1009	999	1012	481	509	499	496	502	475	513	510	502	510
Gaithersburg	1062	1019	1047	1005	1023	522	499	513	495	500	540	520	534	510	523
Kennedy	991	966	1009	956	982	483	473	498	469	484	508	493	512	486	497
Magruder	1117	1125	1104	1115	1112	544	551	544	548	548	573	574	560	567	564
Northwest	1034	1053	1033	1054	1034	510	513	503	517	511	524	540	529	538	523
Paint Branch	1049	1077	1038	1050	1063	512	518	502	508	518	537	559	536	542	545
Poolesville	1129	1148	1093	1157	1133	557	563	545	571	557	573	584	548	586	576
Quince Orchard	1101	1074	1104	1116	1117	534	519	536	545	553	567	555	568	572	564
R. Montgomery	1223	1164	1212	1214	1195	607	573	599	600	594	616	591	613	615	601
Rockville	1062	1081	1074	1105	1058	524	529	527	543	521	538	552	548	563	537
Seneca Valley	1026	998	1032	1027	1056	499	486	506	499	511	527	512	526	528	544
Sherwood	1074	1071	1092	1087	1099	530	526	536	534	538	545	545	556	553	562
Springbrook	1046	1054	1054	1047	1033	512	510	516	519	506	535	544	538	528	526
W. Johnson	1161	1192	1164	1185	1203	567	583	572	584	593	594	609	592	601	610
Watkins Mill	1084	1091	1064	1060	1033	536	535	525	519	508	548	556	539	541	525
Wheaton	940	918	904	911	894	457	444	444	443	440	482	474	460	468	454
Whitman	1236	1249	1260	1245	1267	609	612	619	610	624	627	637	641	634	644
Wootton	1208	1203	1195	1220	1235	586	578	574	592	599	622	625	621	627	636
Special Schools	970		1037		854	499		487		433	471		550		421

Note: The highest scores are those obtained from one administration of the old version of the SAT.



Table C4  
Mean Most Recent SAT Combined Verbal and Math Scores for Students in the MCPS Class of 2005  
by High School and Demographic Group

School	All	African Am.	Asian Am.	Hispanic	White	Male	Female	FARMS	Spec. Ed.	LEP
All MCPS	1102	917	1163	942	1174	1121	1084	878	911	797
B-CC	1183	956	1123	1004	1254	1183	1183	908	931	836
Blair	1104	889	1260	919	1293	1149	1063	854	910	690
Blake	1053	937	1130	934	1138	1061	1046	852	886	806
Churchill	1223	1008	1287	1128	1220	1246	1198	1018	1001	
Damascus	1096	983	1142	956	1104	1108	1086	929	890	
Einstein	1002	899	999	889	1143	1004	1000	873	725	765
Gaithersburg	1011	900	1029	912	1100	1020	1001	875	813	719
Kennedy	969	904	1016	895	1117	995	944	863	932	824
Magruder	1098	917	1179	942	1147	1104	1092	913	839	
Northwest	1020	893	1115	906	1093	1035	1008	921	869	
Paint Branch	1049	931	1117	998	1132	1074	1024	877	711	
Poolesville	1124		1103		1125	1115	1132		882	
Quince Orchard	1102	922	1205	971	1126	1145	1073	816	895	820
R. Montgomery	1185	1012	1199	913	1261	1173	1195	879	893	893
Rockville	1046	938	1072	878	1097	1061	1030	853	923	770
Seneca Valley	1042	936	1044	1000	1110	1067	1013	940	1009	782
Sherwood	1085	952	1123	994	1110	1115	1056	913	1069	
Springbrook	1019	934	1094	834	1176	1048	989	815	815	707
W. Johnson	1189	1009	1226	1085	1203	1209	1170		973	1022
Watkins Mill	1019	857	1016	994	1136	1031	1012	910	703	
Wheaton	881	827	953	833	971	870	891	854	639	716
Whitman	1256	1053	1239	1090	1275	1274	1237	1055	987	958
Wootton	1223	1077	1254	1118	1217	1231	1215	1059	1044	
Special Schools	844						853			

*Note:* Scores are not reported for subgroups with fewer than five students.

**THIS PAGE IS LEFT BLANK INTENTIONALLY**

**Appendix D**  
**SAT Participation and Performance for the MCPS Classes of 2001 to 2005**  
**by High School**

**Table D1**  
**SAT Participation and Performance of MCPS Seniors in the Classes of 2001 to 2005**  
**for Bethesda-Chevy Chase High School**

SAT Indicator	Class Year	All	Gender		Race/Ethnicity				Special Services			
			Male	Female	Afr. Am.	Asian Am.	Hisp.	White	F A R M S	Spec. Ed.	L E P	
SAT Participation	Took SAT	2001	240	109	131	45	18	19	158	18	13	8
		2002	224	107	117	31	15	23	155	18	17	4
		2003	262	128	134	44	15	19	184	18	31	4
		2004	299	140	159	41	23	27	208	11	22	10
		2005	322	171	151	41	17	34	229	22	30	13
	% Took SAT	2001	84.2	82.0	86.2	84.9	85.7	59.4	88.3	75.0	65.0	61.5
		2002	79.4	75.4	83.6	60.8	83.3	59.0	89.1	64.3	63.0	28.6
		2003	82.9	81.0	84.8	81.5	83.3	45.2	91.1	52.9	77.5	30.8
		2004	82.6	80.5	84.6	74.5	88.5	61.4	87.8	44.0	81.5	41.7
		2005	87.0	84.2	90.4	89.1	81.0	68.0	90.9	81.5	81.1	52.0
Most Recent SAT Scores	Total	2001	1139	1155	1125	896	1095	924	1238	832	826	689
		2002	1153	1165	1142	915	986	962	1245	822	952	740
		2003	1139	1162	1117	885	1012	881	1236	763	920	803
		2004	1161	1182	1143	920	1186	946	1233	906	960	830
		2005	1183	1183	1183	956	1123	1004	1254	908	931	836
	Verbal	2001	564	561	566	444	536	446	615	417	413	289
		2002	572	577	566	444	489	465	621	387	478	303
		2003	566	574	558	448	481	433	615	364	461	313
		2004	576	580	573	462	573	474	612	449	473	349
		2005	588	580	598	488	521	500	625	444	466	363
	Math	2001	575	595	558	452	559	478	623	415	413	400
		2002	581	587	576	472	497	497	624	435	474	438
		2003	573	587	559	438	531	448	621	398	459	490
		2004	585	602	570	459	613	472	621	457	487	481
		2005	595	603	585	469	601	504	630	465	466	473
Highest SAT Scores	Total	2001	1152	1164	1142	916	1121	949	1248	873	855	714
		2002	1164	1174	1155	931	992	968	1257	839	980	740
		2003	1150	1174	1128	901	1039	908	1244	782	945	818
		2004	1172	1195	1152	934	1190	958	1245	906	966	832
		2005	1196	1195	1198	986	1142	1009	1265	922	941	851
	Verbal	2001	570	564	575	456	551	463	618	433	430	315
		2002	575	581	570	447	495	470	624	385	484	303
		2003	572	579	565	455	500	448	618	378	470	325
		2004	581	585	578	467	571	481	617	449	477	351
		2005	595	587	603	501	537	504	629	453	471	379
	Math	2001	582	600	567	460	570	486	629	441	425	399
		2002	589	593	585	483	497	498	632	454	496	438
		2003	578	594	563	446	539	460	625	404	475	493
		2004	591	610	574	467	620	477	627	457	489	481
		2005	602	608	595	484	605	505	636	470	470	472

**Table D2**  
**SAT Participation and Performance of MCPS Seniors in the Classes of 2001 to 2005**  
**for Blair High School**

SAT Indicator	Class Year	All	Gender		Race/Ethnicity				Special Services			
			Male	Female	Afr. Am.	Asian Am.	Hisp.	White	F A R M S	Spec. Ed.	L E P	
SAT Participation	Took SAT	2001	383	188	195	102	60	39	182	33	15	11
		2002	448	223	225	133	98	47	170	44	8	8
		2003	460	232	228	125	81	57	196	62	14	10
		2004	449	213	236	135	78	44	192	62	10	6
		2005	537	256	281	179	102	72	183	72	19	20
	% Took SAT	2001	65.0	63.3	66.8	53.1	76.9	32.5	91.5	38.8	37.5	21.6
		2002	68.6	64.3	73.5	63.3	83.1	34.6	89.9	43.6	29.6	14.3
		2003	66.5	65.4	67.7	63.8	74.3	34.5	88.7	45.3	29.2	15.2
		2004	67.2	64.7	69.6	64.0	83.0	29.5	89.7	51.7	23.8	11.1
		2005	71.1	68.8	73.4	69.1	81.0	41.9	92.9	53.7	36.5	35.1
Most Recent SAT Scores	Total	2001	1144	1199	1091	891	1306	945	1275	922	955	801
		2002	1135	1163	1106	883	1236	959	1322	897	920	685
		2003	1128	1170	1085	902	1221	911	1295	904	951	689
		2004	1148	1184	1115	922	1316	872	1301	899	960	688
		2005	1104	1149	1063	889	1260	919	1293	854	910	690
	Verbal	2001	567	590	545	439	634	466	638	442	463	342
		2002	560	566	554	442	592	463	661	424	468	274
		2003	557	573	542	445	590	443	648	430	455	285
		2004	572	576	568	459	642	431	655	431	494	288
		2005	545	559	532	439	611	456	643	401	452	296
	Math	2001	577	609	546	452	672	479	636	480	492	459
		2002	575	597	553	441	644	496	660	473	453	411
		2003	571	598	544	457	632	468	647	474	496	404
		2004	576	608	546	463	674	440	646	468	466	400
		2005	559	590	530	450	649	463	650	453	458	394
Highest SAT Scores	Total	2001	1155	1208	1103	906	1316	956	1283	935	966	801
		2002	1144	1170	1117	890	1247	976	1329	902	926	685
		2003	1139	1180	1096	914	1234	921	1304	919	964	701
		2004	1155	1190	1125	933	1321	877	1309	908	960	688
		2005	1114	1158	1074	902	1267	928	1301	864	927	702
	Verbal	2001	572	594	550	446	637	473	642	447	469	340
		2002	564	570	557	444	596	471	664	426	474	279
		2003	563	578	548	449	597	450	653	437	466	294
		2004	575	579	572	462	643	433	659	436	494	288
		2005	549	563	537	446	614	459	646	406	457	304
	Math	2001	583	614	553	460	679	483	642	489	497	461
		2002	580	600	560	446	652	505	664	476	453	406
		2003	576	602	549	465	637	471	650	482	497	407
		2004	580	611	553	470	678	443	649	472	466	400
		2005	565	595	537	456	653	469	655	458	469	398

**Table D3**  
**SAT Participation and Performance of MCPS Seniors in the Classes of 2001 to 2005**  
**for Blake High School**

SAT Indicator	Class Year	All	Gender		Race/Ethnicity				Special Services			
			Male	Female	Afr. Am.	Asian Am.	Hisp.	White	F A R M S	Spec. Ed.	L E P	
SAT Participation	Took SAT	2001	210	96	114	62	35	13	100	19	5	5
		2002	252	109	143	72	28	14	137	11	9	1
		2003	261	109	152	86	19	11	144	14	18	0
		2004	278	103	175	96	21	17	143	10	7	0
		2005	351	159	192	127	43	21	160	19	23	5
	% Took SAT	2001	75.8	70.6	80.9	63.3	87.5	50.0	89.3	57.6	33.3	50.0
		2002	72.6	67.7	76.9	58.1	87.5	51.9	84.0	64.7	40.9	
		2003	77.2	72.7	80.9	74.1	82.6	45.8	82.8	50.0	60.0	
		2004	77.4	74.1	79.5	69.6	77.8	53.1	89.4	35.7	38.9	
		2005	80.3	77.6	82.8	77.4	87.8	63.6	84.7	48.7	62.2	62.5
Most Recent SAT Scores	Total	2001	1033	1056	1014	933	1075	941	1092	836	856	778
		2002	1029	1008	1045	888	1045	966	1108	908	928	
		2003	1042	1034	1048	921	1134	1028	1104	805	902	
		2004	1068	1062	1071	953	1164	978	1143	909	904	
		2005	1053	1061	1046	937	1130	934	1138	852	886	806
	Verbal	2001	520	520	520	479	501	479	558	413	450	326
		2002	511	484	531	442	486	484	556	430	482	
		2003	518	506	527	464	529	504	550	382	450	
		2004	538	527	545	483	571	500	576	471	416	
		2005	524	516	532	479	527	468	567	431	437	392
Math	2001	513	536	494	454	575	462	535	423	406	452	
	2002	518	523	514	446	560	482	552	478	446		
	2003	524	529	520	457	605	525	554	423	452	.	
	2004	529	535	526	471	593	478	566	438	489	.	
	2005	528	545	515	458	603	466	571	422	449	414	
Highest SAT Scores	Total	2001	1045	1068	1026	945	1084	969	1104	839	860	792
		2002	1041	1022	1056	897	1077	969	1119	930	928	
		2003	1055	1046	1060	935	1147	1050	1115	822	907	
		2004	1081	1075	1084	966	1173	991	1157	909	911	
		2005	1064	1074	1056	950	1144	947	1147	868	910	844
	Verbal	2001	525	526	525	484	506	484	563	412	448	334
		2002	517	493	534	443	509	486	561	446	482	
		2003	526	512	536	468	534	529	559	391	458	
		2004	545	535	551	490	576	502	583	471	423	
		2005	531	525	536	486	538	473	572	439	448	412
Math	2001	520	543	501	462	578	485	541	428	412	458	
	2002	525	529	521	454	568	483	558	484	446		
	2003	529	535	525	466	613	521	557	431	449		
	2004	536	541	534	476	598	489	574	438	489		
	2005	533	549	520	464	606	473	575	429	462	432	

**Table D4**  
**SAT Participation and Performance of MCPS Seniors in the Classes of 2001 to 2005**  
**for Churchill High School**

SAT Indicator	Class Year	All	Gender		Race/Ethnicity				Special Services			
			Male	Female	Afr. Am.	Asian Am.	Hisp.	White	F A R M S	Spec. Ed.	L E P	
SAT Participation	Took SAT	2001	348	176	172	15	77	14	242	6	21	0
		2002	412	198	214	9	92	18	292	4	27	0
		2003	401	199	202	23	87	17	272	2	21	0
		2004	446	240	206	18	116	21	291	9	36	0
		2005	438	227	211	25	109	14	290	8	32	0
	% Took SAT	2001	93.5	91.7	95.6	78.9	98.7	87.5	93.4	85.7	84.0	
		2002	90.7	89.2	92.2	37.5	97.9	81.8	93.3	80.0	73.0	
		2003	89.5	88.8	90.2	88.5	93.5	77.3	89.2		60.0	
		2004	88.3	87.9	88.8	56.3	92.8	80.8	90.4	90.0	62.1	
		2005	91.4	90.1	93.0	67.6	96.5	77.8	93.2	57.1	62.7	
Most Recent SAT Scores	Total	2001	1211	1222	1199	1047	1241	1045	1221	1017	1132	
		2002	1199	1202	1196	1048	1249	1092	1196	1100	1005	
		2003	1200	1208	1191	981	1247	1171	1206		1006	
		2004	1210	1231	1185	1027	1256	1141	1207	1059	1093	
		2005	1223	1246	1198	1008	1287	1128	1220	1018	1001	
	Verbal	2001	590	589	591	530	599	517	595	493	565	
		2002	582	577	587	507	592	544	584	513	482	
		2003	582	582	581	476	597	582	586		494	
		2004	587	593	579	507	587	573	592	511	539	
		2005	595	600	589	501	617	560	595	495	476	
	Math	2001	621	634	608	517	642	528	626	523	567	
		2002	617	625	610	541	657	548	612	588	523	
		2003	618	626	611	505	650	589	620		511	
		2004	623	637	606	519	669	568	615	548	553	
		2005	628	647	609	507	670	568	625	523	525	
Highest SAT Scores	Total	2001	1222	1233	1211	1057	1256	1070	1230	1025	1134	
		2002	1213	1215	1211	1056	1263	1107	1209	1103	1019	
		2003	1213	1219	1206	989	1265	1182	1218		1019	
		2004	1224	1242	1202	1038	1273	1160	1220	1090	1104	
		2005	1232	1255	1206	1023	1298	1148	1227	1025	1009	
	Verbal	2001	594	591	596	531	605	526	598	497	565	
		2002	588	581	594	508	598	557	589	528	489	
		2003	588	587	590	478	605	582	593		498	
		2004	594	599	589	517	596	586	599	532	546	
		2005	598	604	591	507	622	581	597	513	479	
	Math	2001	628	642	614	527	651	544	632	528	569	
		2002	625	633	617	548	665	549	620	575	530	
		2003	624	632	617	511	661	599	624		521	
		2004	630	644	613	522	678	574	621	558	558	
		2005	634	651	615	516	677	566	630	512	531	

**Table D5**  
**SAT Participation and Performance of MCPS Seniors in the Classes of 2001 to 2005**  
**for Damascus High School**

SAT Indicator	Class Year	All	Gender		Race/Ethnicity				Special Services			
			Male	Female	Afr. Am.	Asian Am.	Hisp.	White	F A R M S	Spec. Ed.	L E P	
SAT Participation	Took SAT	2001	259	106	153	12	13	9	223	3	10	0
		2002	304	160	144	19	18	11	256	5	13	0
		2003	327	156	171	13	16	5	293	5	13	0
		2004	311	160	151	12	32	11	256	6	10	0
		2005	316	139	177	19	19	10	267	7	9	0
	% Took SAT	2001	75.7	67.5	82.7	70.6	81.3	64.3	76.4		34.5	
		2002	79.2	78.0	80.4	65.5	90.0	73.3	80.0	55.6	48.1	
		2003	72.2	67.8	76.7	76.5	88.9	33.3	72.7	35.7	33.3	
		2004	73.7	69.0	79.5	42.9	91.4	68.8	74.6	42.9	30.3	
		2005	77.1	70.2	83.5	67.9	82.6	47.6	79.5	53.8	34.6	
Most Recent SAT Scores	Total	2001	1074	1076	1073	943	1112	960	1083		825	
		2002	1077	1088	1064	965	1134	978	1085	962	885	
		2003	1087	1104	1071	862	1104	1026	1097	860	943	
		2004	1090	1110	1070	923	1167	994	1093	858	901	
		2005	1096	1108	1086	983	1142	956	1104	929	890	
	Verbal	2001	523	515	529	463	548	476	527		376	
		2002	520	522	518	491	544	469	523	470	417	
		2003	527	528	526	445	522	474	532	412	438	
		2004	532	535	529	454	561	474	535	420	429	
		2005	534	532	535	483	546	450	539	479	453	
	Math	2001	551	561	544	479	564	484	557		449	
		2002	556	566	546	474	590	509	562	492	468	
		2003	560	576	545	416	582	552	565	448	505	
		2004	558	575	540	469	606	520	558	438	472	
		2005	562	576	551	500	596	506	565	450	437	
Highest SAT Scores	Total	2001	1086	1088	1085	969	1118	968	1095		827	
		2002	1089	1102	1075	974	1146	989	1098	962	901	
		2003	1099	1116	1084	880	1134	1026	1108	878	965	
		2004	1108	1126	1089	943	1191	1005	1110	882	906	
		2005	1109	1117	1102	1017	1155	994	1115	957	893	
	Verbal	2001	529	522	534	484	543	477	532		378	
		2002	527	530	523	494	554	477	529	470	426	
		2003	534	536	533	452	545	472	538	430	454	
		2004	540	542	538	460	573	476	543	415	430	
		2005	540	537	543	498	555	466	545	479	456	
	Math	2001	557	567	551	485	575	491	563		449	
		2002	562	572	551	479	592	512	569	492	475	
		2003	565	580	551	428	589	554	570	448	512	
		2004	568	584	551	483	618	529	567	467	476	
		2005	568	581	558	519	601	528	570	479	438	



**Table D6**  
**SAT Participation and Performance of MCPS Seniors in the Classes of 2001 to 2005**  
**for Einstein High School**

SAT Indicator	Class Year	All	Gender		Race/Ethnicity				Special Services			
			Male	Female	Afr. Am.	Asian Am.	Hisp.	White	F A R M S	Spec. Ed.	L E P	
SAT Participation	Took SAT	2001	193	98	95	50	35	45	63	39	9	6
		2002	191	82	109	51	26	35	77	27	10	13
		2003	222	108	114	59	43	35	84	34	13	2
		2004	217	96	121	61	46	39	71	49	12	21
		2005	263	113	150	67	39	60	94	47	10	26
	% Took SAT	2001	59.8	58.0	61.7	52.6	66.0	48.4	77.8	57.4	42.9	26.1
		2002	58.4	49.7	67.3	60.7	66.7	35.0	77.8	42.9	43.5	33.3
		2003	59.0	55.4	63.0	62.1	76.8	32.7	73.0	45.9	41.9	7.4
		2004	57.1	49.0	65.8	57.0	69.7	34.5	75.5	51.0	37.5	43.8
		2005	66.2	60.1	71.8	62.6	86.7	46.9	82.5	58.8	27.0	44.8
Most Recent SAT Scores	Total	2001	947	987	906	832	950	868	1094	765	706	700
		2002	1012	1051	982	861	1027	922	1146	824	1003	678
		2003	998	1025	972	886	985	900	1121	839	789	
		2004	990	1010	974	869	984	901	1146	905	998	751
		2005	1002	1004	1000	899	999	889	1143	873	725	765
	Verbal	2001	476	495	457	423	443	434	567	357	356	330
		2002	505	513	499	431	474	465	582	383	507	287
		2003	493	503	484	442	453	446	568	399	402	
		2004	492	503	483	445	451	457	577	437	487	333
		2005	496	488	502	453	467	435	573	419	366	344
	Math	2001	471	493	449	409	507	434	527	407	350	370
		2002	507	538	483	430	553	457	564	441	496	391
		2003	504	522	487	443	532	454	553	440	387	
		2004	498	507	491	424	533	444	570	469	511	418
		2005	506	517	498	446	532	454	570	454	359	422
Highest SAT Scores	Total	2001	957	993	919	840	964	877	1101	768	721	700
		2002	1023	1059	996	870	1042	934	1157	827	1010	686
		2003	1009	1038	982	896	999	917	1130	849	795	
		2004	999	1018	984	876	997	914	1152	919	1004	753
		2005	1012	1017	1009	913	1010	896	1152	880	744	775
	Verbal	2001	481	497	465	428	451	441	568	361	360	330
		2002	509	516	504	433	481	467	588	381	516	284
		2003	499	508	490	444	459	463	571	406	407	
		2004	496	506	489	449	458	465	579	444	493	334
		2005	502	495	508	464	473	439	578	423	376	353
	Math	2001	475	496	454	413	513	436	533	407	361	370
		2002	513	543	491	437	561	467	569	446	494	402
		2003	510	529	492	452	540	454	559	443	388	
		2004	502	511	495	427	538	449	573	475	511	419
		2005	510	522	501	449	537	456	574	457	368	422

**Table D7**  
**SAT Participation and Performance of MCPS Seniors in the Classes of 2001 to 2005**  
**for Gaithersburg High School**

SAT Indicator	Class Year	All	Gender		Race/Ethnicity				Special Services			
			Male	Female	Afr. Am.	Asian Am.	Hisp.	White	F A R M S	Spec. Ed.	L E P	
SAT Participation	Took SAT	2001	270	131	139	41	50	29	150	11	7	0
		2002	284	132	152	44	45	34	160	25	15	2
		2003	326	158	168	52	48	40	183	18	13	2
		2004	327	151	176	64	44	53	166	40	22	8
		2005	320	166	154	70	52	54	141	40	17	16
	% Took SAT	2001	61.9	63.0	61.0	38.3	78.1	38.2	79.8	22.0	20.0	
		2002	70.8	67.3	74.1	60.3	81.8	41.5	84.7	43.9	45.5	
		2003	73.3	71.5	75.0	62.7	84.2	44.4	86.3	43.9	39.4	
		2004	72.8	69.6	75.9	60.4	84.6	50.0	90.2	54.8	53.7	23.5
		2005	72.2	74.4	70.0	63.6	85.2	54.0	83.4	61.5	38.6	40.0
Most Recent SAT Scores	Total	2001	1050	1069	1032	917	1076	962	1094	975	990	
		2002	1006	1008	1003	818	1031	892	1075	853	733	
		2003	1036	1042	1030	945	1049	895	1089	948	807	
		2004	994	1014	977	900	1001	848	1075	802	779	655
		2005	1011	1020	1001	900	1029	912	1100	875	813	719
	Verbal	2001	516	516	516	450	507	484	544	493	494	
		2002	491	488	495	402	482	449	528	406	351	
		2003	507	505	508	462	499	441	536	456	407	
		2004	489	491	487	443	472	410	536	387	371	274
		2005	494	489	498	446	479	445	543	402	401	303
	Math	2001	533	552	516	467	569	477	551	482	496	
		2002	514	521	508	416	549	443	547	447	382	
		2003	529	537	522	482	550	454	553	492	400	
		2004	505	523	490	457	530	438	539	415	408	381
		2005	517	530	503	454	549	467	557	473	412	416
Highest SAT Scores	Total	2001	1062	1081	1044	928	1099	970	1104	975	1000	
		2002	1019	1020	1018	837	1052	895	1087	883	757	
		2003	1047	1053	1040	955	1055	906	1101	949	808	
		2004	1005	1022	990	908	1014	858	1087	809	785	655
		2005	1023	1031	1015	917	1041	920	1111	881	831	726
	Verbal	2001	522	523	522	456	516	490	548	493	503	
		2002	499	495	502	415	498	448	534	430	362	
		2003	513	513	513	469	503	451	541	456	402	
		2004	495	495	494	445	479	414	543	387	376	274
		2005	500	495	505	456	487	449	547	405	412	309
	Math	2001	540	558	523	472	583	480	556	482	497	
		2002	520	525	515	422	554	447	553	453	395	
		2003	534	541	527	486	552	455	560	493	406	
		2004	510	527	496	463	535	444	543	422	409	381
		2005	523	535	510	461	554	471	564	477	419	416

**Table D8**  
**SAT Participation and Performance of MCPS Seniors in the Classes of 2001 to 2005**  
**for Kennedy High School**

SAT Indicator	Class Year	All	Gender		Race/Ethnicity				Special Services			
			Male	Female	Afr. Am.	Asian Am.	Hisp.	White	F A R M S	Spec. Ed.	L E P	
SAT Participation	Took SAT	2001	193	78	115	76	37	19	60	23	11	
		2002	216	106	110	82	41	42	51	34	12	5
		2003	197	100	97	79	34	27	56	32	19	
		2004	201	80	121	94	29	31	45	33	12	5
		2005	226	111	115	90	33	47	54	52	17	16
	% Took SAT	2001	63.7	54.9	71.4	62.8	80.4	37.3	71.4	46.9	28.9	
		2002	69.7	68.8	70.5	65.6	87.2	56.8	79.7	58.6	37.5	25.0
		2003	61.4	62.5	60.2	64.8	81.0	38.6	65.1	48.5	39.6	
		2004	62.2	54.4	68.8	65.7	90.6	39.2	67.2	53.2	32.4	23.8
		2005	69.5	65.3	74.2	67.7	97.1	52.8	80.6	71.2	39.5	51.6
Most Recent SAT Scores	Total	2001	978	966	986	859	1067	873	1105	862	755	
		2002	950	985	916	893	1026	866	1050	843	729	628
		2003	997	990	1005	893	1064	901	1146	886	887	
		2004	940	951	932	866	1053	850	1091	828	793	762
		2005	969	995	944	904	1016	895	1117	863	932	824
	Verbal	2001	477	458	489	423	502	419	546	421	355	
		2002	469	478	460	447	471	438	526	401	358	286
		2003	490	480	501	440	510	449	568	418	431	
		2004	461	458	462	428	500	418	538	405	396	342
		2005	477	486	468	446	482	445	554	413	469	363
	Math	2001	501	508	497	436	565	454	559	440	400	
		2002	481	508	456	445	555	428	524	442	372	342
		2003	507	511	503	454	554	452	578	468	457	
		2004	479	493	470	439	553	432	552	423	397	420
		2005	493	508	477	458	534	449	563	450	464	461
Highest SAT Scores	Total	2001	991	972	1004	877	1081	879	1114	868	765	
		2002	966	1005	928	908	1042	880	1069	857	743	696
		2003	1009	999	1019	906	1073	914	1158	903	890	
		2004	956	959	954	882	1067	864	1105	844	814	762
		2005	982	1009	956	920	1026	900	1129	873	945	836
	Verbal	2001	483	463	496	431	511	424	549	419	366	
		2002	473	481	465	449	480	441	530	405	356	280
		2003	498	487	509	448	514	463	572	433	432	
		2004	469	463	474	436	506	422	549	412	417	342
		2005	484	496	473	456	492	449	558	422	465	381
	Math	2001	508	509	508	446	571	455	565	449	399	
		2002	493	524	464	459	562	438	539	452	387	416
		2003	512	513	510	457	559	451	586	470	458	
		2004	486	496	480	446	561	442	556	432	398	420
		2005	497	513	482	465	534	451	570	451	480	455

**Table D9**  
**SAT Participation and Performance of MCPS Seniors in the Classes of 2001 to 2005**  
**for Magruder High School**

SAT Indicator	Class Year	All	Gender		Race/Ethnicity				Special Services			
			Male	Female	Afr. Am.	Asian Am.	Hisp.	White	F A R M S	Spec. Ed.	L E P	
SAT Participation	Took SAT	2001	284	139	145	39	51	13	180	9	11	2
		2002	302	142	160	34	47	19	202	10	15	0
		2003	315	141	174	38	52	23	200	12	14	0
		2004	325	143	182	35	53	22	214	19	15	0
		2005	347	173	174	48	64	40	195	19	14	3
	% Took SAT	2001	72.6	72.0	73.2	55.7	94.4	27.1	82.9	27.3	34.4	
		2002	72.9	69.3	76.6	50.7	77.0	40.4	84.5	32.3	48.4	
		2003	69.5	65.3	73.4	55.9	74.3	37.7	79.4	26.1	37.8	
		2004	66.1	63.6	68.2	51.5	64.6	30.6	79.6	28.8	28.8	
		2005	70.0	65.5	75.0	57.1	80.0	54.1	75.6	39.6	26.4	
Most Recent SAT Scores	Total	2001	1104	1111	1097	949	1100	1052	1143	869	1005	
		2002	1114	1127	1102	924	1133	962	1155	838	847	
		2003	1092	1102	1085	989	1135	1006	1112	824	879	
		2004	1104	1124	1088	945	1163	959	1131	916	933	
		2005	1098	1104	1092	917	1179	942	1147	913	839	
	Verbal	2001	538	533	543	470	514	506	563	417	486	
		2002	545	542	549	472	539	450	568	396	396	
		2003	539	536	541	497	545	503	550	408	413	
		2004	543	548	540	476	544	463	563	437	468	
		2005	540	536	544	469	561	469	566	448	413	
	Math	2001	566	578	554	479	586	546	580	452	519	
		2002	568	585	553	452	594	512	587	442	451	
		2003	554	566	544	492	590	503	562	417	466	
		2004	560	575	549	469	618	496	569	479	465	
		2005	557	567	547	448	619	474	581	465	426	
Highest SAT Scores	Total	2001	1117	1124	1110	963	1119	1061	1155	881	1035	
		2002	1125	1137	1113	936	1142	968	1167	842	855	
		2003	1104	1110	1099	1003	1146	1013	1124	839	891	
		2004	1115	1133	1100	959	1171	964	1143	919	933	
		2005	1112	1116	1107	936	1197	954	1159	945	859	
	Verbal	2001	544	539	548	476	521	510	568	423	499	
		2002	551	547	554	474	544	454	574	397	398	
		2003	544	540	548	501	553	502	556	413	419	
		2004	548	550	546	482	548	467	566	438	468	
		2005	548	544	552	480	569	472	573	464	425	
	Math	2001	573	585	562	487	598	551	587	458	535	
		2002	574	591	559	462	598	514	593	445	457	
		2003	560	570	551	501	593	511	568	426	473	
		2004	567	583	555	477	623	497	576	481	465	
		2005	564	572	556	457	628	482	586	481	434	

**Table D10**  
**SAT Participation and Performance of MCPS Seniors in the Classes of 2001 to 2005**  
**for Northwest High School**

SAT Indicator	Class Year	All	Gender		Race/Ethnicity				Special Services			
			Male	Female	Afr. Am.	Asian Am.	Hisp.	White	F A R M S	Spec. Ed.	L E P	
SAT Participation	Took SAT	2001	176	76	100	42	19	10	105	6	10	0
		2002	255	134	121	57	33	17	146	7	14	1
		2003	281	146	135	75	45	23	137	14	17	0
		2004	244	109	135	65	40	16	123	15	16	0
		2005	347	156	191	103	48	32	164	22	16	1
	% Took SAT	2001	71.3	67.3	74.6	57.5	86.4	43.5	81.4	35.3	37.0	
		2002	77.5	76.1	79.1	71.3	86.8	50.0	84.4	43.8	42.4	
		2003	76.6	80.7	72.6	75.8	93.8	56.1	77.0	70.0	42.5	
		2004	69.3	63.0	75.4	61.9	81.6	55.2	73.2	71.4	39.0	
		2005	80.9	80.0	81.6	75.7	92.3	76.2	82.4	68.8	44.4	
Most Recent SAT Scores	Total	2001	1021	1026	1017	937	1016	966	1060	810	855	
		2002	1042	1045	1038	926	1079	948	1092	947	851	
		2003	1021	1031	1010	876	1067	953	1097	919	764	
		2004	1042	1084	1008	866	1198	862	1108	831	797	
		2005	1020	1035	1008	893	1115	906	1093	921	869	
	Verbal	2001	503	499	506	473	487	479	520	410	426	
		2002	507	501	514	454	511	466	533	473	407	
		2003	497	495	498	438	498	450	537	441	376	
		2004	510	525	499	434	556	434	546	415	386	
		2005	504	501	506	447	534	448	541	462	434	
	Math	2001	518	527	511	464	529	487	541	400	429	
		2002	535	544	524	472	569	482	559	474	444	
		2003	524	535	512	439	569	503	560	478	388	
		2004	532	559	510	433	643	428	561	415	411	
		2005	516	534	502	446	582	458	552	459	436	
Highest SAT Scores	Total	2001	1034	1039	1029	947	1024	970	1076	813	872	
		2002	1053	1058	1047	933	1095	951	1105	951	869	
		2003	1033	1042	1023	888	1087	967	1106	929	778	
		2004	1054	1094	1022	884	1209	864	1119	844	799	
		2005	1034	1049	1022	909	1130	918	1106	929	893	
	Verbal	2001	510	503	515	482	490	479	527	413	437	
		2002	513	508	518	460	514	464	539	476	421	
		2003	503	502	506	442	510	462	542	447	384	
		2004	517	530	505	438	562	438	553	415	388	
		2005	511	509	514	455	544	455	548	468	438	
	Math	2001	524	536	515	465	534	491	549	400	435	
		2002	540	550	530	473	581	486	565	476	449	
		2003	529	540	517	446	577	505	564	482	395	
		2004	538	564	517	445	647	427	565	429	411	
		2005	523	540	508	454	587	463	558	461	455	

**Table D11**  
**SAT Participation and Performance of MCPS Seniors in the Classes of 2001 to 2005**  
**for Paint Branch High School**

SAT Indicator	Class Year	All	Gender		Race/Ethnicity				Special Services			
			Male	Female	Afr. Am.	Asian Am.	Hisp.	White	F A R M S	Spec. Ed.	L E P	
SAT Participation	Took SAT	2001	300	143	157	90	67	17	126	16	12	2
		2002	290	132	158	75	85	21	109	15	12	2
		2003	287	140	147	105	64	13	105	21	12	0
		2004	286	146	140	92	78	17	99	19	4	3
		2005	317	156	161	116	75	15	109	23	11	3
	% Took SAT	2001	79.6	76.1	83.1	72.0	91.8	70.8	81.3	59.3	44.4	
		2002	81.7	79.5	83.6	73.5	90.4	75.0	83.2	83.3	50.0	
		2003	78.8	74.1	84.0	72.9	88.9	61.9	82.7	53.8	46.2	
		2004	75.1	75.6	74.5	64.3	83.9	60.7	84.6	70.4	19.0	
		2005	77.7	76.1	79.3	74.8	88.2	50.0	80.1	57.5	45.8	
Most Recent SAT Scores	Total	2001	1033	1054	1015	920	1111	981	1080	888	746	
		2002	1064	1078	1053	921	1116	1018	1131	986	827	
		2003	1021	1023	1018	933	1064	936	1093	881	670	
		2004	1036	1072	999	929	1105	907	1104	862	700	
		2005	1049	1074	1024	931	1117	998	1132	877	711	
	Verbal	2001	503	504	502	456	519	486	530	435	383	
		2002	512	514	510	449	523	502	548	453	410	
		2003	490	485	495	454	495	456	527	415	311	
		2004	503	514	491	461	520	449	537	417	345	
		2005	510	517	504	462	529	471	553	428	333	
	Math	2001	530	550	513	464	591	495	550	453	363	
		2002	552	564	543	472	593	516	583	533	417	
		2003	531	538	524	479	568	480	566	467	359	
		2004	533	558	508	468	585	458	567	444	355	
		2005	538	557	520	469	587	527	579	449	378	
Highest SAT Scores	Total	2001	1049	1067	1032	935	1128	990	1096	900	753	
		2002	1077	1091	1066	931	1137	1023	1142	1007	828	
		2003	1038	1042	1034	946	1088	958	1111	897	723	
		2004	1050	1085	1013	941	1128	910	1114	872	700	
		2005	1063	1087	1039	945	1131	1004	1148	892	735	
	Verbal	2001	512	513	511	464	529	486	540	442	378	
		2002	518	519	518	454	528	501	557	459	410	
		2003	502	497	507	466	512	468	537	429	357	
		2004	508	519	497	465	531	451	541	418	345	
		2005	518	523	513	471	535	470	560	446	353	
	Math	2001	537	555	521	471	599	504	556	458	376	
		2002	559	572	548	476	609	521	585	547	418	
		2003	536	545	528	480	576	490	574	468	367	
		2004	542	566	516	476	597	459	573	454	355	
		2005	545	564	526	473	596	534	587	446	383	

**Table D12**  
**SAT Participation and Performance of MCPS Seniors in the Classes of 2001 to 2005**  
**for Poolesville High School**

SAT Indicator	Class Year	All	Gender		Race/Ethnicity				Special Services			
			Male	Female	Afr. Am.	Asian Am.	Hisp.	White	F A R M S	Spec. Ed.	L E P	
SAT Participation	Took SAT	2001	109	53	56	0	5	3	101	1	6	0
		2002	129	53	76	7	7	6	109	4	3	0
		2003	140	58	82	4	2	4	130	4	7	0
		2004	144	66	78	2	7	0	135	0	3	0
		2005	142	71	71	2	7	1	130	4	6	0
	% Took SAT	2001	75.2	73.6	76.7		100.0		75.9		54.5	
		2002	76.8	75.7	77.6	46.7	100.0	85.7	78.4			
		2003	79.5	71.6	86.3				79.8		38.9	
		2004	81.8	75.9	87.6		100.0		84.9			
		2005	84.5	86.6	82.6		100.0		85.0		54.5	
Most Recent SAT Scores	Total	2001	1121	1127	1115		1174		1121		898	
		2002	1136	1172	1110	1079	1213	1022	1141			
		2003	1082	1078	1085				1083		817	
		2004	1145	1152	1138		1176		1142			
		2005	1124	1115	1132		1103		1125		882	
	Verbal	2001	553	549	557		536		555		463	
		2002	559	568	552	556	573	510	561			
		2003	538	529	544				538		409	
		2004	563	557	569		553		563			
		2005	552	539	566		520		555		428	
	Math	2001	568	578	558		638		566		435	
		2002	577	603	559	523	640	512	580			
		2003	545	549	542				546		409	
		2004	581	596	569		623		579			
		2005	571	577	566		583		570		453	
Highest SAT Scores	Total	2001	1129	1135	1123		1196		1129		898	
		2002	1148	1181	1125	1093	1221	1022	1154			
		2003	1093	1086	1098				1093		840	
		2004	1157	1164	1151		1189		1154			
		2005	1133	1127	1139		1124		1135		885	
	Verbal	2001	557	552	561		544		559		463	
		2002	563	570	558	553	583	510	566			
		2003	545	536	551				544		423	
		2004	571	567	574		561		571			
		2005	557	546	569		537		560		423	
	Math	2001	573	583	563		652		570		435	
		2002	584	610	567	540	639	512	588			
		2003	548	550	547				549		417	
		2004	586	597	577		627		583			
		2005	576	581	570		587		575		462	

**Table D13**  
**SAT Participation and Performance of MCPS Seniors in the Classes of 2001 to 2005**  
**for Quince Orchard High School**

SAT Indicator	Class Year	All	Gender		Race/Ethnicity				Special Services			
			Male	Female	Afr. Am.	Asian Am.	Hisp.	White	F A R M S	Spec. Ed.	L E P	
SAT Participation	Took SAT	2001	295	140	155	30	66	16	183	10	16	28
		2002	313	150	163	34	67	33	178	11	16	19
		2003	304	138	166	39	73	21	171	16	17	16
		2004	333	163	170	30	74	24	205	9	18	6
		2005	325	134	191	39	60	29	197	15	14	9
	% Took SAT	2001	74.7	71.8	77.5	52.6	93.0	39.0	81.3	58.8	42.1	82.4
		2002	75.8	70.8	81.1	50.7	84.8	57.9	85.2	37.9	50.0	48.7
		2003	76.4	73.0	79.4	65.0	84.9	45.7	83.0	51.6	51.5	43.2
		2004	79.5	78.0	81.0	61.2	87.1	54.5	85.1	52.9	52.9	31.6
		2005	78.5	72.8	83.0	59.1	89.6	50.0	89.1	50.0	45.2	31.0
Most Recent SAT Scores	Total	2001	1087	1115	1062	878	1084	913	1138	867	1026	902
		2002	1061	1077	1047	887	1066	978	1107	868	877	835
		2003	1089	1127	1058	922	1124	961	1129	939	804	986
		2004	1102	1096	1109	931	1149	961	1127	942	919	742
		2005	1102	1145	1073	922	1205	971	1126	816	895	820
	Verbal	2001	527	530	525	446	493	472	558	414	516	375
		2002	513	510	516	444	481	479	545	413	427	337
		2003	529	539	520	464	507	495	557	453	403	393
		2004	537	528	545	479	532	466	555	462	451	288
		2005	544	557	535	467	567	491	561	382	462	334
	Math	2001	560	585	538	432	591	441	580	453	510	527
		2002	548	567	530	443	585	499	562	455	450	497
		2003	560	588	538	457	616	466	572	486	401	594
		2004	565	568	563	451	617	495	572	480	468	453
		2005	558	588	537	454	638	481	566	434	433	486
Highest SAT Scores	Total	2001	1101	1126	1078	883	1105	919	1151	867	1040	915
		2002	1074	1090	1058	890	1083	982	1121	870	884	841
		2003	1104	1144	1071	931	1137	970	1146	948	804	1001
		2004	1116	1109	1124	946	1167	970	1140	948	944	757
		2005	1117	1153	1091	935	1220	1000	1139	855	925	857
	Verbal	2001	534	536	533	449	505	475	564	417	527	386
		2002	519	516	522	442	490	486	550	419	433	346
		2003	536	550	525	467	515	503	565	459	403	400
		2004	545	537	552	487	541	468	564	469	459	303
		2005	553	563	546	474	578	508	568	409	474	367
	Math	2001	567	591	545	434	600	444	588	450	513	529
		2002	555	575	536	448	593	497	571	451	451	495
		2003	568	594	546	464	622	468	580	489	401	601
		2004	572	572	572	459	626	503	577	479	485	453
		2005	564	590	545	461	642	492	571	447	451	490



**Table D14**  
**SAT Participation and Performance of MCPS Seniors in the Classes of 2001 to 2005**  
**for Richard Montgomery High School**

SAT Indicator	Class Year	All	Gender		Race/Ethnicity				Special Services			
			Male	Female	Afr. Am.	Asian Am.	Hisp.	White	F A R M S	Spec. Ed.	L E P	
SAT Participation	Took SAT	2001	280	129	151	15	54	26	184	14	9	4
		2002	304	140	164	33	60	30	180	21	11	11
		2003	277	120	157	25	63	18	170	13	12	3
		2004	331	157	174	29	85	26	191	26	14	3
		2005	330	149	181	26	95	38	169	18	12	21
	% Took SAT	2001	71.2	68.3	74.0	40.5	83.1	41.3	81.4	46.7	26.5	
		2002	77.2	72.5	81.6	64.7	85.7	60.0	81.1	67.7	42.3	44.0
		2003	72.9	69.4	75.8	65.8	84.0	36.7	78.3	44.8	30.0	
		2004	77.0	71.4	82.9	54.7	94.4	40.6	85.7	56.5	38.9	
		2005	79.3	74.9	83.4	51.0	93.1	62.3	84.5	60.0	38.7	55.3
Most Recent SAT Scores	Total	2001	1209	1195	1220	939	1197	968	1270	881	1144	
		2002	1155	1161	1149	980	1171	958	1214	921	901	753
		2003	1200	1217	1187	1000	1194	1131	1238	1039	1045	
		2004	1203	1196	1210	1042	1245	987	1239	963	918	
		2005	1185	1173	1195	1012	1199	913	1261	879	893	893
	Verbal	2001	600	588	610	476	564	488	638	411	548	
		2002	568	566	570	494	549	462	605	409	429	283
		2003	592	593	592	510	566	566	617	489	517	
		2004	594	581	606	530	594	495	617	452	457	
		2005	588	569	603	505	577	446	635	412	443	384
	Math	2001	609	607	610	463	633	480	633	469	597	
		2002	587	595	579	486	622	496	608	512	472	470
		2003	607	624	595	489	628	565	621	550	528	
		2004	610	615	604	512	650	492	622	511	461	
		2005	597	604	592	507	621	467	625	466	450	509
Highest SAT Scores	Total	2001	1223	1209	1235	945	1220	987	1282	891	1151	
		2002	1164	1170	1159	990	1182	961	1224	930	920	753
		2003	1212	1228	1200	1012	1213	1139	1248	1045	1055	
		2004	1214	1206	1221	1050	1262	995	1248	981	927	
		2005	1195	1185	1202	1017	1214	925	1267	905	897	906
	Verbal	2001	607	596	617	480	578	493	643	424	552	
		2002	573	571	575	500	555	464	610	415	441	283
		2003	599	598	600	516	577	569	622	496	518	
		2004	600	587	611	531	605	502	621	462	457	
		2005	594	577	607	507	590	454	638	433	444	393
	Math	2001	616	614	618	465	642	494	639	468	599	
		2002	591	600	584	490	627	498	614	514	479	470
		2003	613	630	600	496	636	571	626	548	537	
		2004	615	619	610	519	658	492	627	519	470	
		2005	601	608	596	510	624	471	630	472	453	512

**Table D15**  
**SAT Participation and Performance of MCPS Seniors in the Classes of 2001 to 2005**  
**for Rockville High School**

SAT Indicator	Class Year	All	Gender		Race/Ethnicity				Special Services			
			Male	Female	Afr. Am.	Asian Am.	Hisp.	White	F A R M S	Spec. Ed.	L E P	
SAT Participation	Took SAT	2001	192	90	102	28	31	22	110	27	15	3
		2002	164	82	82	25	29	18	91	14	18	4
		2003	159	69	90	17	30	13	99	16	12	1
		2004	126	59	67	15	24	11	76	14	4	2
		2005	171	84	87	27	28	15	99	15	15	6
	% Took SAT	2001	72.7	65.2	81.0	71.8	75.6	51.2	78.6	60.0	46.9	
		2002	70.4	68.3	72.6	53.2	90.6	47.4	79.1	40.0	47.4	
		2003	61.9	54.3	69.2	48.6	68.2	31.0	72.8	42.1	34.3	
		2004	56.0	54.6	57.3	37.5	77.4	22.0	73.1	29.8		
		2005	69.5	68.3	70.7	61.4	75.7	36.6	81.8	50.0	53.6	33.3
Most Recent SAT Scores	Total	2001	1050	1066	1035	925	995	841	1140	862	842	
		2002	1067	1082	1051	894	1102	911	1134	1008	848	
		2003	1063	1083	1048	950	1046	954	1102	961	929	
		2004	1091	1133	1054	893	1144	954	1133	971		
		2005	1046	1061	1030	938	1072	878	1097	853	923	770
	Verbal	2001	519	519	518	463	455	420	571	414	423	
		2002	523	522	523	455	501	453	562	505	415	
		2003	520	522	519	478	492	463	543	446	457	
		2004	537	553	522	430	540	445	570	444		
		2005	516	517	515	470	506	435	546	421	451	343
	Math	2001	531	547	517	462	540	421	569	448	419	
		2002	544	560	528	439	602	458	572	503	433	
		2003	543	561	529	472	554	491	559	515	473	
		2004	554	579	532	463	605	508	563	527		
		2005	529	544	515	468	566	443	551	432	471	427
Highest SAT Scores	Total	2001	1062	1079	1046	943	1010	855	1149	873	861	
		2002	1081	1093	1069	909	1117	922	1149	1012	857	
		2003	1074	1094	1059	958	1056	967	1114	974	958	
		2004	1105	1147	1069	909	1160	965	1147	984	980	
		2005	1058	1075	1041	941	1088	884	1110	855	926	810
	Verbal	2001	524	524	524	473	461	430	574	419	431	
		2002	529	527	531	460	508	461	568	505	424	
		2003	527	528	525	491	490	476	551	459	473	
		2004	543	558	529	441	547	450	575	453		
		2005	521	522	520	470	512	438	551	421	454	365
Math	2001	538	556	523	470	549	424	576	454	430		
	2002	552	565	538	449	609	462	580	507	433		
	2003	548	566	534	467	566	491	564	515	486		
	2004	563	588	540	468	614	515	572	531			
	2005	537	553	521	471	576	446	558	433	471	445	

**Table D16**  
**SAT Participation and Performance of MCPS Seniors in the Classes of 2001 to 2005**  
**for Seneca Valley High School**

SAT Indicator	Class Year	All	Gender		Race/Ethnicity				Special Services			
			Male	Female	Afr. Am.	Asian Am.	Hisp.	White	F A R M S	Spec. Ed.	L E P	
SAT Participation	Took SAT	2001	201	86	115	31	28	18	123	10	7	6
		2002	195	100	95	48	31	14	102	13	14	18
		2003	228	115	113	45	27	22	134	17	13	6
		2004	238	135	103	53	39	20	124	18	13	3
		2005	213	113	100	57	36	21	99	10	11	6
	% Took SAT	2001	61.1	55.5	66.1	44.9	68.3	33.3	75.0	27.0	25.9	15.0
		2002	59.1	54.6	64.6	54.5	91.2	30.4	63.0	41.9	37.8	39.1
		2003	63.3	62.2	64.6	53.6	73.0	37.9	74.0	45.9	34.2	16.7
		2004	69.0	69.9	67.8	61.6	83.0	39.2	78.0	56.3	39.4	
		2005	67.2	66.9	67.6	64.0	83.7	45.7	71.2	38.5	40.7	27.3
Most Recent SAT Scores	Total	2001	1016	1057	985	907	956	965	1062	774	924	818
		2002	986	994	978	844	974	888	1070	797	812	733
		2003	1020	1040	1000	901	1044	865	1081	876	904	712
		2004	1015	1011	1021	890	1027	1027	1064	938	807	
		2005	1042	1067	1013	936	1044	1000	1110	940	1009	782
	Verbal	2001	493	498	490	434	436	486	521	362	457	307
		2002	480	479	481	412	455	416	528	362	415	327
		2003	499	501	498	441	476	426	536	406	448	282
		2004	493	487	502	434	474	518	521	428	393	
		2005	505	514	494	461	471	497	544	411	511	300
	Math	2001	522	559	495	473	520	479	541	412	467	512
		2002	506	514	498	432	518	471	542	435	397	406
		2003	521	539	502	460	568	440	545	469	455	430
		2004	522	525	518	457	553	510	543	511	414	
		2005	537	552	519	475	573	503	566	529	498	482
Highest SAT Scores	Total	2001	1026	1067	996	911	980	965	1072	786	936	850
		2002	998	1007	989	855	985	897	1083	811	828	738
		2003	1032	1051	1013	911	1067	875	1092	888	927	712
		2004	1027	1021	1035	900	1039	1031	1078	942	818	
		2005	1056	1078	1031	951	1064	1005	1123	959	1013	803
	Verbal	2001	499	501	497	437	456	487	523	376	464	353
		2002	486	488	485	418	463	426	534	377	426	336
		2003	506	508	505	448	488	440	540	422	456	282
		2004	499	490	512	441	479	521	528	428	403	
		2005	511	520	501	466	482	500	550	419	515	318
	Math	2001	527	566	499	474	524	478	548	410	471	497
		2002	512	519	504	437	522	471	549	434	401	402
		2003	526	543	508	463	579	434	551	466	471	430
		2004	528	531	523	460	559	511	550	513	415	
		2005	544	557	530	485	582	505	573	540	497	485

**Table D17**  
**SAT Participation and Performance of MCPS Seniors in the Classes of 2001 to 2005**  
**for Sherwood High School**

SAT Indicator	Class Year	All	Gender		Race/Ethnicity				Special Services			
			Male	Female	Afr. Am.	Asian Am.	Hisp.	White	F A R M S	Spec. Ed.	L E P	
SAT Participation	N Took SAT	2001	325	167	158	48	27	13	237	12	21	6
		2002	304	160	144	42	40	13	209	16	17	8
		2003	363	173	190	42	47	12	262	11	22	6
		2004	364	187	177	29	40	22	273	8	25	6
		2005	332	163	169	42	35	19	236	10	18	3
	% Took SAT	2001	80.4	79.9	81.0	77.4	75.0	46.4	85.3	48.0	53.8	27.3
		2002	77.2	71.4	84.7	56.8	78.4	54.2	85.3	48.5	44.7	30.8
		2003	83.3	83.6	83.0	72.4	87.0	46.2	87.9	44.0	62.9	33.3
		2004	77.6	78.2	77.0	50.9	81.6	55.0	84.5	44.4	55.6	26.1
		2005	74.4	71.2	77.9	62.7	70.0	57.6	79.7	37.0	54.5	
Most Recent SAT Scores	Total	2001	1054	1069	1038	953	1002	942	1086	856	989	615
		2002	1056	1078	1032	915	1026	999	1094	928	896	691
		2003	1070	1090	1051	985	1076	981	1086	841	870	693
		2004	1072	1086	1059	886	1041	1074	1097	974	920	638
		2005	1085	1115	1056	952	1123	994	1110	913	1069	
	Verbal	2001	517	517	518	485	461	468	533	414	480	263
		2002	518	522	514	466	478	493	538	443	434	299
		2003	524	529	520	502	488	478	537	382	432	290
		2004	528	529	527	431	494	532	543	471	445	277
		2005	532	540	524	473	521	495	547	385	525	
	Math	2001	537	552	520	469	540	474	553	442	509	352
		2002	538	555	518	449	548	506	556	484	463	393
		2003	545	561	532	483	588	503	550	459	438	403
		2004	544	557	531	454	546	542	554	503	476	362
		2005	553	575	532	479	603	499	563	528	544	
Highest SAT Scores	Total	2001	1074	1088	1060	962	1016	967	1110	867	1025	638
		2002	1071	1095	1045	934	1041	1018	1108	947	902	714
		2003	1092	1112	1074	1008	1102	1016	1107	883	911	747
		2004	1087	1099	1074	900	1061	1085	1110	993	925	638
		2005	1099	1129	1071	965	1146	997	1124	920	1087	
	Verbal	2001	530	528	531	492	474	485	546	426	500	277
		2002	526	531	520	473	484	502	546	452	440	306
		2003	536	541	532	510	505	504	548	410	455	320
		2004	534	532	535	433	508	535	548	485	450	277
		2005	538	546	530	480	531	495	552	385	527	
	Math	2001	545	560	529	470	542	482	564	441	525	362
		2002	545	564	525	460	557	516	562	495	462	408
		2003	556	571	541	498	597	512	560	473	456	427
		2004	553	567	539	467	554	551	563	508	476	362
		2005	562	584	541	485	616	502	572	535	560	

**Table D18**  
**SAT Participation and Performance of MCPS Seniors in the Classes of 2001 to 2005**  
**for Springbrook High School**

SAT Indicator	Class Year	All	Gender		Race/Ethnicity				Special Services			
			Male	Female	Afr. Am.	Asian Am.	Hisp.	White	F A R M S	Spec. Ed.	L E P	
SAT Participation	Took SAT	2001	338	171	167	110	93	29	105	50	13	3
		2002	290	149	141	96	86	19	87	29	4	0
		2003	318	147	171	94	98	24	102	41	14	3
		2004	356	180	176	139	80	29	107	49	11	3
		2005	291	149	142	123	82	28	57	34	8	6
	% Took SAT	2001	74.9	72.5	77.7	76.9	83.0	40.3	85.4	58.1	44.8	
		2002	71.6	72.0	71.2	69.1	83.5	33.3	83.7	48.3		
		2003	70.7	66.5	74.7	62.7	89.1	37.5	81.6	50.0	53.8	
		2004	73.7	74.1	73.3	74.3	81.6	40.8	84.9	56.3	47.8	
		2005	73.5	70.3	77.2	69.5	90.1	45.2	87.7	49.3	42.1	37.5
Most Recent SAT Scores	Total	2001	1031	1070	992	922	1071	991	1122	930	848	
		2002	1038	1077	998	906	1102	876	1153	855		
		2003	1041	1075	1012	946	1034	849	1181	846	824	
		2004	1034	1047	1021	933	1069	921	1169	861	855	
		2005	1019	1048	989	934	1094	834	1176	815	815	707
	Verbal	2001	504	521	488	461	501	491	557	437	423	
		2002	503	513	492	449	513	425	566	420		
		2003	509	519	499	474	489	413	582	407	394	
		2004	513	514	512	472	510	457	583	430	429	
		2005	498	505	492	464	523	405	579	382	418	332
	Math	2001	527	549	504	461	570	500	565	493	425	
		2002	536	564	505	457	588	451	587	435		
		2003	532	556	512	472	545	435	599	439	429	
		2004	521	533	509	461	559	464	586	431	426	
		2005	520	544	497	470	571	429	597	432	398	375
Highest SAT Scores	Total	2001	1046	1084	1007	936	1088	994	1140	942	855	
		2002	1054	1091	1014	919	1117	893	1171	862		
		2003	1054	1088	1024	964	1047	855	1190	852	827	
		2004	1047	1060	1033	945	1082	924	1185	870	891	
		2005	1033	1061	1004	948	1110	851	1187	832	830	707
	Verbal	2001	512	527	496	468	507	494	567	444	426	
		2002	510	520	499	454	518	440	575	423		
		2003	516	525	508	480	501	416	587	409	396	
		2004	519	520	518	475	518	458	591	432	448	
		2005	506	513	500	472	533	415	583	396	421	332
	Math	2001	535	558	511	468	581	500	573	498	429	
		2002	544	571	516	464	599	453	596	439		
		2003	538	563	516	484	547	439	603	444	431	
		2004	528	540	515	470	564	466	593	438	443	
		2005	526	548	504	476	577	436	604	436	409	375

**Table D19**  
**SAT Participation and Performance of MCPS Seniors in the Classes of 2001 to 2005**  
**for Walter Johnson High School**

SAT Indicator	Class Year	All	Gender		Race/Ethnicity				Special Services			
			Male	Female	Afr. Am.	Asian Am.	Hisp.	White	F A R M S	Spec. Ed.	L E P	
SAT Participation	Took SAT	2001	309	159	150	17	46	28	217	13	39	7
		2002	298	158	140	18	46	18	216	5	35	7
		2003	336	158	178	15	46	33	242	5	24	4
		2004	351	161	190	16	56	22	255	11	26	4
		2005	387	190	197	13	55	38	281	4	32	6
	% Took SAT	2001	80.1	79.9	80.2	51.5	82.1	60.9	86.8	76.5	79.6	33.3
		2002	81.0	79.4	82.8	69.2	93.9	52.9	83.4	35.7	64.8	38.9
		2003	82.0	79.0	84.8	62.5	85.2	58.9	87.7	45.5	63.2	
		2004	83.0	79.3	86.4	55.2	91.8	55.0	87.6	44.0	54.2	
		2005	81.8	80.9	82.8	43.3	85.9	60.3	89.2		61.5	21.4
Most Recent SAT Scores	Total	2001	1150	1160	1140	891	1160	956	1194	1016	1011	810
		2002	1180	1185	1174	975	1196	1044	1204	946	1033	921
		2003	1154	1173	1137	942	1147	995	1190	948	996	
		2004	1177	1183	1172	1035	1201	1035	1194	1004	971	
		2005	1189	1209	1170	1009	1226	1085	1203		973	1022
	Verbal	2001	560	555	564	449	523	469	588	459	506	279
		2002	578	570	588	482	573	529	592	458	519	369
		2003	566	566	567	467	538	489	588	436	495	
		2004	581	577	584	531	554	513	596	472	507	
		2005	587	589	585	521	581	541	597		478	392
	Math	2001	591	605	576	442	637	487	606	557	505	531
		2002	601	615	586	493	623	515	613	488	514	553
		2003	587	607	570	475	608	505	602	512	500	
		2004	597	607	588	504	648	522	598	532	463	
		2005	602	620	585	488	645	544	606		495	630
Highest SAT Scores	Total	2001	1161	1167	1154	906	1176	961	1203	1021	1017	861
		2002	1192	1197	1186	990	1218	1053	1215	988	1038	921
		2003	1164	1181	1149	950	1168	1004	1198	958	998	
		2004	1185	1189	1181	1041	1214	1053	1200	1036	975	
		2005	1203	1222	1185	1028	1240	1092	1218		990	1022
	Verbal	2001	567	561	574	465	535	475	594	460	512	319
		2002	583	574	592	484	586	533	594	468	524	369
		2003	572	571	572	469	552	495	592	438	500	
		2004	584	579	589	529	562	528	598	497	511	
		2005	593	595	591	530	585	547	603		488	392
	Math	2001	594	606	580	442	641	487	610	561	505	543
		2002	609	623	594	506	633	521	620	520	515	553
		2003	592	610	576	481	616	508	606	520	498	
		2004	601	610	593	512	652	525	602	539	464	
		2005	610	626	594	498	655	546	614		502	630

**Table D20**  
**SAT Participation and Performance of MCPS Seniors in the Classes of 2001 to 2005**  
**for Watkins Mill High School**

SAT Indicator	Class Year	All	Gender		Race/Ethnicity				Special Services			
			Male	Female	Afr. Am.	Asian Am.	Hisp.	White	F A R M S	Spec. Ed.	L E P	
SAT Participation	N Took SAT	2001	268	116	152	57	31	25	154	16	12	0
		2002	297	153	144	60	51	20	164	21	12	0
		2003	295	137	158	65	45	20	165	14	9	0
		2004	274	125	149	63	38	32	141	20	5	3
		2005	264	100	164	77	46	28	113	30	10	4
	% Took SAT	2001	61.5	52.0	71.4	49.1	79.5	48.1	67.5	36.4	27.9	
		2002	68.0	64.8	71.6	48.0	83.6	47.6	79.2	39.6	22.2	
		2003	69.4	63.4	75.6	54.2	83.3	54.1	77.5	38.9	22.0	
		2004	60.8	60.7	60.8	46.0	82.6	40.0	75.0	31.3	13.9	
		2005	66.0	57.1	72.9	61.1	88.5	38.9	75.3	50.8	32.3	
Most Recent SAT Scores	Total	2001	1071	1076	1068	941	1077	990	1132	903	883	
		2002	1081	1111	1050	957	1081	931	1146	893	993	
		2003	1053	1069	1039	901	1095	928	1116	819	842	
		2004	1049	1063	1037	892	1081	967	1129	967	950	
		2005	1019	1031	1012	857	1016	994	1136	910	703	
	Verbal	2001	530	526	533	469	515	492	561	444	418	
		2002	532	535	529	487	518	469	562	440	485	
		2003	517	522	513	450	516	474	549	401	427	
		2004	513	513	513	440	499	493	554	435	448	
		2005	500	499	501	422	484	488	562	438	339	
	Math	2001	542	550	535	472	561	498	570	459	466	
		2002	549	576	521	471	563	462	585	453	508	
		2003	536	547	526	450	579	454	567	418	416	
		2004	536	550	523	453	582	473	575	532	502	
		2005	519	532	511	435	532	506	574	471	364	
Highest SAT Scores	Total	2001	1084	1089	1080	952	1090	995	1146	921	893	
		2002	1091	1118	1063	964	1099	939	1155	904	996	
		2003	1064	1081	1049	912	1112	938	1126	834	860	
		2004	1060	1071	1051	901	1095	977	1140	979	962	
		2005	1033	1039	1029	866	1034	1013	1150	922	713	
	Verbal	2001	536	532	539	470	524	494	569	444	426	
		2002	535	537	533	487	525	472	564	443	486	
		2003	525	530	520	456	531	481	555	415	440	
		2004	519	515	522	446	507	497	559	444	452	
		2005	508	503	511	426	496	498	571	445	341	
	Math	2001	548	557	541	481	566	500	576	477	468	
		2002	556	581	530	477	574	467	591	460	510	
		2003	539	551	529	456	581	457	571	419	420	
		2004	541	556	529	455	588	480	581	535	510	
		2005	525	536	518	440	538	515	579	476	372	

**Table D21**  
**SAT Participation and Performance of MCPS Seniors in the Classes of 2001 to 2005**  
**for Wheaton High School**

SAT Indicator	Class Year	Gender			Race/Ethnicity				Special Services			
		All	Male	Female	Afr. Am.	Asian Am.	Hisp.	White	F A R M S	Spec. Ed.	L E P	
SAT Participation	Took SAT	2001	173	76	97	44	34	39	55	49	9	4
		2002	138	70	68	38	18	47	35	42	10	3
		2003	182	97	85	44	42	51	44	50	16	9
		2004	164	74	90	47	28	48	41	59	12	10
		2005	197	93	104	64	32	56	44	68	9	13
	% Took SAT	2001	58.4	51.7	65.1	55.7	79.1	41.9	68.8	53.3	39.1	
		2002	52.7	49.3	56.7	57.6	64.3	44.8	55.6	47.2	32.3	
		2003	58.5	59.5	57.4	62.9	79.2	41.8	68.8	51.5	50.0	27.3
		2004	60.7	55.2	66.2	71.2	80.0	45.7	64.1	62.8	50.0	40.0
		2005	62.5	53.8	73.2	68.8	84.2	46.7	69.8	59.1	37.5	36.1
Most Recent SAT Scores	Total	2001	923	962	893	824	974	833	1030	836	762	
		2002	909	916	901	861	1023	861	967	893	800	
		2003	887	873	903	802	965	824	966	843	691	623
		2004	895	917	877	864	959	820	975	837	678	625
		2005	881	870	891	827	953	833	971	854	639	716
	Verbal	2001	450	466	437	407	441	421	508	400	373	
		2002	442	445	439	422	462	423	478	427	369	
		2003	435	421	452	396	466	405	478	407	336	294
		2004	433	435	432	436	430	396	476	402	308	315
		2005	434	416	450	405	448	415	492	415	329	311
	Math	2001	473	496	455	418	533	412	522	437	389	
		2002	467	471	462	438	561	438	488	465	431	
		2003	451	452	450	406	499	419	488	436	356	329
		2004	462	482	445	428	528	423	499	435	370	310
		2005	447	454	440	422	505	417	479	439	310	405
Highest SAT Scores	Total	2001	940	973	913	840	996	855	1040	854	779	
		2002	918	924	912	869	1042	867	975	902	800	
		2003	904	891	918	816	995	838	977	859	697	647
		2004	911	931	895	882	976	832	992	852	691	637
		2005	894	884	904	845	974	841	978	867	654	743
	Verbal	2001	457	470	448	413	454	427	515	406	384	
		2002	444	446	443	424	466	427	478	429	369	
		2003	444	432	458	402	477	415	485	418	336	307
		2004	443	442	443	442	436	406	490	410	318	328
		2005	440	424	455	415	455	418	495	421	331	328
	Math	2001	482	503	466	427	542	427	525	448	394	
		2002	474	478	469	445	576	440	497	473	431	
		2003	460	460	460	414	517	424	491	441	361	340
		2004	468	488	452	440	540	426	502	441	373	309
		2005	454	460	449	430	519	423	483	446	323	415



**Table D22**  
**SAT Participation and Performance of MCPS Seniors in the Classes of 2001 to 2005**  
**for Walt Whitman High School**

SAT Indicator	Class Year	All	Gender		Race/Ethnicity				Special Services			
			Male	Female	Afr. Am.	Asian Am.	Hisp.	White	F A R M S	Spec. Ed.	L E P	
SAT Participation	Took SAT	2001	354	188	166	10	68	21	254	7	28	13
		2002	384	188	196	13	63	16	292	2	18	11
		2003	404	192	212	8	60	18	317	2	22	6
		2004	382	189	193	15	50	17	299	4	25	10
		2005	418	223	195	13	56	18	331	6	19	16
	% Took SAT	2001	89.2	87.4	91.2	66.7	89.5	75.0	92.0	58.3	73.7	65.0
		2002	91.9	88.7	95.1	68.4	92.6	76.2	94.2		78.3	55.0
		2003	87.4	82.4	92.6	53.3	89.6	69.2	89.8		57.9	31.6
		2004	85.5	82.9	88.1	83.3	86.2	65.4	86.9		53.2	45.5
		2005	90.9	89.6	92.4	72.2	96.6	72.0	92.2	66.7	61.3	64.0
Most Recent SAT Scores	Total	2001	1223	1233	1213	1029	1217	1152	1239	1030	978	860
		2002	1242	1257	1228	1072	1193	1091	1269		883	988
		2003	1248	1283	1216	934	1273	1154	1257		1088	1080
		2004	1234	1247	1222	985	1230	1126	1255		1058	984
		2005	1256	1274	1237	1053	1239	1090	1275	1055	987	958
	Verbal	2001	601	599	604	505	561	570	619	459	477	352
		2002	609	609	608	521	566	534	626		424	384
		2003	613	625	601	483	594	576	622		560	400
		2004	605	608	603	490	566	571	620		526	374
		2005	619	621	616	516	580	535	633	488	499	401
	Math	2001	622	634	609	524	656	583	620	571	501	508
		2002	633	648	619	552	627	557	643		458	605
		2003	635	658	615	451	680	578	635		528	680
		2004	629	639	618	495	664	555	634		532	610
		2005	637	652	620	538	659	555	641	567	488	557
Highest SAT Scores	Total	2001	1236	1241	1230	1030	1232	1161	1251	1030	1003	865
		2002	1249	1264	1235	1087	1204	1098	1274		896	997
		2003	1260	1294	1230	934	1291	1164	1269		1095	1080
		2004	1245	1257	1233	1008	1242	1131	1265		1062	1003
		2005	1267	1286	1247	1073	1258	1093	1285	1063	996	976
	Verbal	2001	609	606	613	510	570	580	626	459	494	353
		2002	612	610	614	535	570	539	628		431	385
		2003	619	631	608	483	602	584	628		566	408
		2004	610	612	608	496	572	574	625		530	380
		2005	624	627	620	533	587	539	638	482	507	414
	Math	2001	627	635	617	520	663	581	625	571	509	512
		2002	637	654	621	552	635	559	646		466	613
		2003	641	663	622	451	689	580	641		529	672
		2004	634	645	624	512	671	557	640		532	623
		2005	644	658	627	540	671	553	647	582	488	563

**Table D23**  
**SAT Participation and Performance of MCPS Seniors in the Classes of 2001 to 2005**  
**for Wootton High School**

SAT Indicator	Class Year	All	Gender		Race/Ethnicity				Special Services			
			Male	Female	Afr. Am.	Asian Am.	Hisp.	White	F A R M S	Spec. Ed.	L E P	
SAT Participation	Took SAT	2001	349	174	175	14	102	12	218	3	7	0
		2002	412	208	204	13	144	16	238	7	18	0
		2003	411	203	208	12	130	16	253	6	14	0
		2004	444	194	250	13	137	17	277	9	19	1
		2005	493	256	237	10	175	22	286	9	25	3
	% Took SAT	2001	89.0	87.9	90.2	58.3	95.3	70.6	90.5		53.8	
		2002	89.8	88.9	90.7	86.7	96.0	76.2	87.5	63.6	69.2	
		2003	90.7	87.5	94.1	75.0	96.3	72.7	90.4	60.0	73.7	
		2004	92.7	89.0	95.8	76.5	95.8	77.3	93.3	90.0	82.6	
		2005	90.6	90.8	90.5	66.7	94.1	78.6	90.8	69.2	80.6	
Most Recent SAT Scores	Total	2001	1195	1196	1193	1064	1262	1084	1181		960	
		2002	1191	1200	1182	1048	1254	1091	1167	1033	969	
		2003	1180	1189	1172	1015	1224	1060	1173	992	1010	
		2004	1207	1220	1197	968	1238	1172	1205	1040	951	
		2005	1223	1231	1215	1077	1254	1118	1217	1059	1044	
	Verbal	2001	578	573	583	533	600	538	574		466	
		2002	572	569	575	511	594	531	564	487	462	
		2003	566	562	570	513	574	516	568	482	488	
		2004	587	587	587	474	588	577	593	523	457	
		2005	593	592	595	552	600	547	594	488	502	
	Math	2001	617	623	610	531	663	547	607		494	
		2002	619	631	607	537	660	561	603	546	507	
		2003	614	627	602	502	651	544	606	510	522	
		2004	620	633	610	494	651	595	612	517	494	
		2005	630	639	620	525	654	571	623	571	542	
Highest SAT Scores	Total	2001	1208	1209	1207	1071	1278	1110	1193		993	
		2002	1203	1212	1194	1054	1267	1108	1179	1046	972	
		2003	1195	1203	1187	1026	1239	1075	1188	995	1038	
		2004	1220	1229	1212	982	1255	1182	1215	1041	954	
		2005	1235	1240	1229	1082	1266	1132	1229	1080	1060	
	Verbal	2001	586	580	592	541	612	543	581		484	
		2002	578	576	580	514	600	537	570	486	463	
		2003	574	571	578	517	584	523	575	477	501	
		2004	592	590	594	488	594	584	596	524	457	
		2005	599	598	601	547	607	563	599	508	513	
	Math	2001	622	629	615	530	666	568	612		509	
		2002	625	636	615	540	666	571	609	560	508	
		2003	621	632	610	509	655	552	613	518	537	
		2004	627	639	619	494	661	598	619	517	497	
		2005	636	642	628	535	659	569	629	572	548	